

# Hilltop Gardens, Islip



4 Bedrooms



1 Bathroom



2 Receptions

£525,000



# Description

A well presented and thoughtfully laid out, four-bedroom family home, set on a quiet, private road in the ever-popular village of Islip.

The property comprises an entrance hall, cloakroom, sitting room with wood burning stove, dining room, utility room and large kitchen on the ground floor.

Upstairs, there are four generous bedrooms and a family bathroom.

Outside, there is a sizeable garden to the rear with side access.

To the front, the property overlooks a community green and benefits from an allocated parking space, with the addition of newly installed electric car charging ports.



- Four Bedrooms
- Well Maintained Throughout
- Ground Floor Cloakroom
- Modern Kitchen
- Utility Room
- Quiet & Private Road



## *Additional Information*

### **EPC**

The current EPC rating for this property is C. Please contact us if you require a copy of the full EPC.

### **Council Tax**

The Property is in council tax band E.

### **Viewings**

Viewings on this property are strictly through Alistair Redhouse Property Partners.

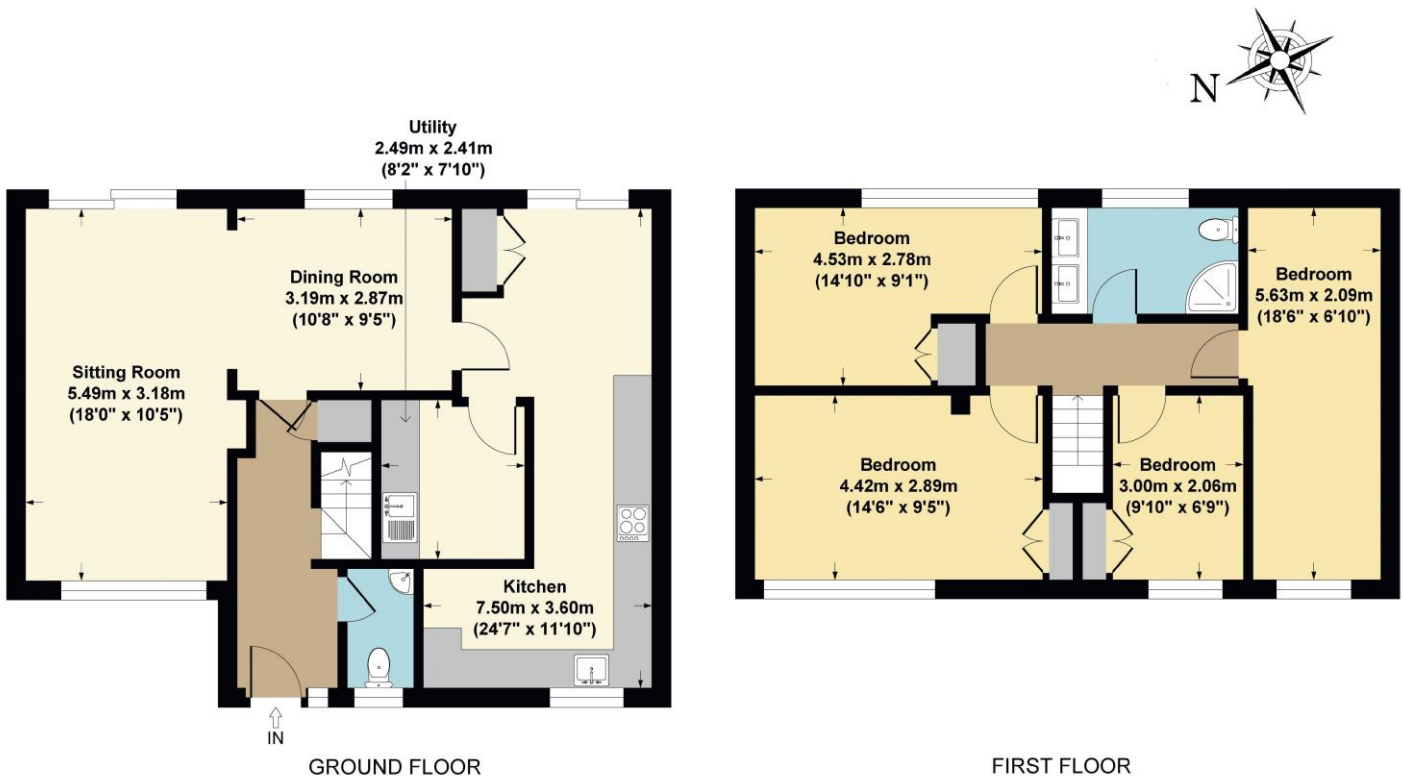
### **Handling Agent**

Robert Cole is the Property Partner looking after the sale of this property and he is working closely with the seller to ensure that they are the best person to answer your questions and to discuss your interest. You can contact Robert directly on the details on the next page and he will be happy to help.

### **Opening Hours**

The offices of Alistair Redhouse are open 09.00-18.00 Monday to Friday and Saturday 09.00-17.00.

# Floorplan



**HILLTOP**  
**APPROX. GROSS INTERNAL FLOOR AREA 122 SQ M / 1313 SQ FT**

*Robert Cole*

Direct Dial: 01865 598275

Robert.Cole@ARPropertyPartners.co.uk



Whilst all statements contained in this brochure are believed to be correct, they are not to be regarded as statements or representations of fact and neither the selling agents nor sellers guarantee their accuracy.

The artist's impressions, photos, floor plans and other information are intended as a general guide only to the appearance and layout of the property.

However, it may be necessary, and rights are reserved to make changes to the appearance, layout and specification at any time without formal notice. Dimensions are approximate. This brochure and statements contained therein do not form any part of an offer or contract.