



ALISTAIR REDHOUSE

PROPERTY PARTNERS

Captivating five-bedroom house – £950,000

Wootton Village, OX1 5HP



More than agents...

*We're your property partners.*

# Description



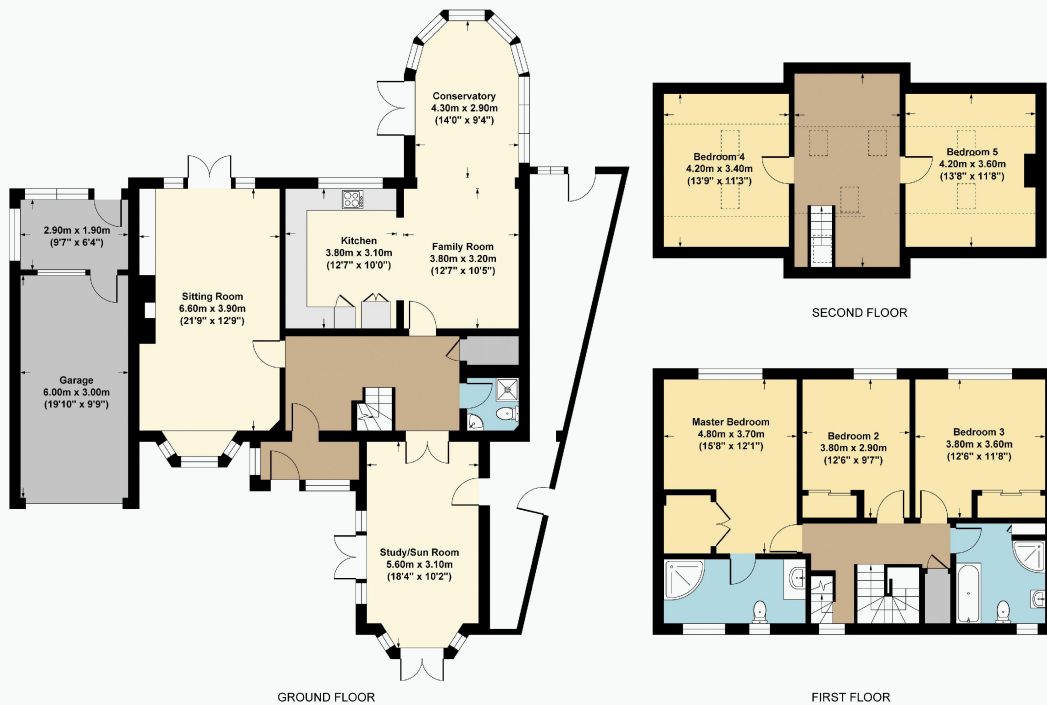
Introducing a captivating five-bedroom detached family house situated in a highly sought-after village, boasting picturesque views of sprawling farmland to the rear. Spanning across three floors, this property exudes a bright and airy ambiance throughout, offering a delightful living experience. Step inside to a welcoming entrance hall that guides you to a generously-sized sitting room with an open fire, perfect for relaxation and unwinding. The rear of the house unveils an impeccably designed open plan kitchen/family/garden room, thoughtfully proportioned and appointed and boasting a log burning stove. Adjacent to the hallway, you'll find a convenient shower room with a WC, as well as a versatile ground floor studio or bedroom, providing endless possibilities for its usage. The first floor houses well-proportioned bedrooms, each offering ample space for comfort. The principal bedroom boasts the added luxury of an en suite and a walk in wardrobe, while a family bathroom serves the remaining bedrooms.

Ascend to the top floor, and you'll be greeted by an extraordinary space with its stunning landing, which not only presents breathtaking countryside vistas but also doubles as a versatile reception area or study. Additionally, two more bedrooms are nestled on this floor, completing the abundant living accommodations of the house. Outside, the property boasts a mature and meticulously maintained garden that offers captivating views across the sprawling farmland at the rear. At the front, a driveway and garden create an inviting first impression. Meanwhile, at the rear, a garage with a potting shed provides ample storage space, while a substantial lean-to on the opposite side of the house is perfectly suited for housing bicycles and bins. In summary, this remarkable property seamlessly combines style, comfort, and functionality. From its thoughtfully arranged interiors to the scenic vistas that surround it, this home promises an enchanting lifestyle for you and your family.



- Perfect destination for nature lovers
- Picturesque village scenery
- No onward chain
- Meticulously maintained garden
- Flexible reception area on the top floor
- Main bedroom with en-suite and walk-in wardrobe

# Floorplan



**WOOTTON VILLAGE BOARS HILL**  
**APPROX. GROSS INTERNAL FLOOR AREA 245 SQ M / 2628 SQ FT**

## Additional Information

### EPC

Current – D

### Council Tax

The Property is in council tax band F.

### Viewings

Viewings on this property are strictly through Alistair Redhouse Property Partners.

### Handling Agent

Alistair Redhouse is the Property Partner looking after the sale of this property and he is working closely with the seller to ensure that they are the best person to answer your questions and to discuss your interest. You can contact Alistair directly on the details on the next page and he will be happy to help.

### Opening Hours

The offices of Alistair Redhouse are open 09.00-18.00 Monday to Friday and Saturday 09.00-17.00.



ALISTAIR REDHOUSE

PROPERTY PARTNERS

Office Number: 01865 364541

[kidlington@aredhouse.co.uk](mailto:kidlington@aredhouse.co.uk)

*Alistair Redhouse*

Direct Dial: 01865 593301

[Alistair.Redhouse@ARPropertyPartners.co.uk](mailto:Alistair.Redhouse@ARPropertyPartners.co.uk)



Whilst all statements contained in this brochure are believed to be correct, they are not to be regarded as statements or representations of fact and neither the selling agents nor sellers guarantee their accuracy.

The artist's impressions, photos, floor plans and other information are intended as a general guide only to the appearance and layout of the property.

However, it may be necessary, and rights are reserved to make changes to the appearance, layout and specification at any time without formal notice. Dimensions are approximate. This brochure and statements contained therein do not form any part of an offer or contract.