



SALES

LETTINGS

MANAGEMENT

chiswick@tatepartnership.co.uk

020 8996 0000

TATEPARTNERSHIP.CO.UK



Burlington Road, W4

£1,395 pcm

"Communal Gardens".

A delightful ground floor Studio Apartment, located in a quiet residential road, close to Gunnersbury Tube Station. The property has an attractive studio room, separate kitchen with washer/dryer, dishwasher and oven. The living space has storage and breakfast bar. Separate bathroom with bath and overhead shower. As a ground floor apartment, you can make good use of the communal gardens. Burlington Road is just off Chiswick High Road, with great shopping, dining and transport facilities. Available Now, Unfurnished.

Approximate Gross Internal Area = 25.6 sq m / 275 sq ft

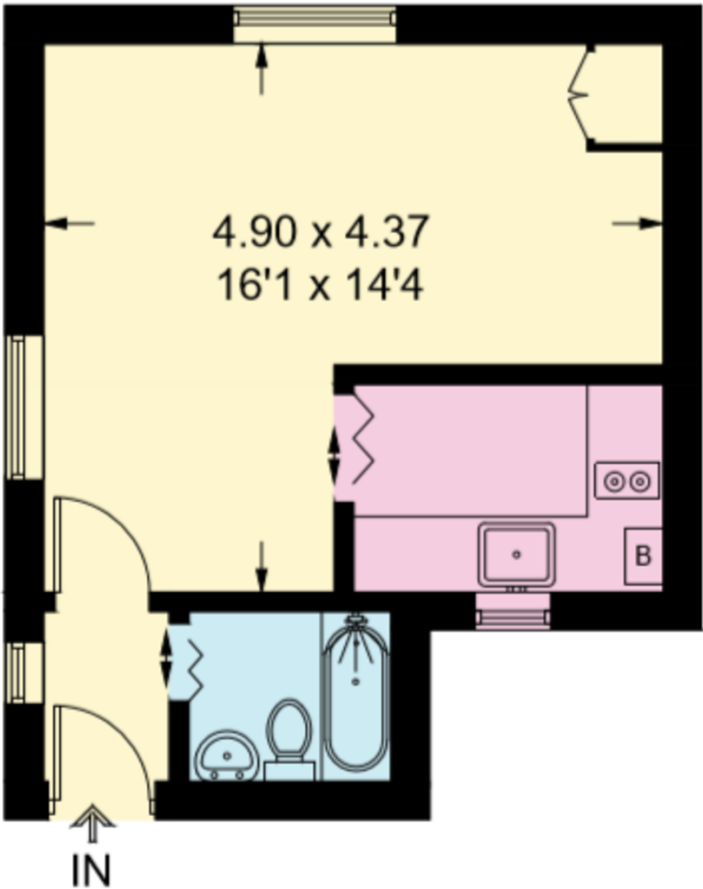


Illustration for identification purposes only, measurements are approximate, not to scale. floorplansUsketch.com © (ID641440)

EPC

