



SALES

LETTINGS

MANAGEMENT

chiswick@tatepartnership.co.uk

020 8996 0000

TATEPARTNERSHIP.CO.UK



Brackley Terrace, Chiswick

£2,850 pcm

A charming Two Bedroom Victorian Terraced Cottage in this central Chiswick location. Full of character throughout, the accommodation includes; entrance hall, Living Room and separate Dining Room, Kitchen, Two Bedrooms and a Family Bathroom. Out back is a delightful private west facing patio garden with brick-built outhouse/wc and to the front a small picture garden. The location is a hidden gem, no-through road and just off Chiswick High Road, perfect for easy access to all central transport, shopping and dining facilities. Available Now, Unfurnished.

Brackley Terrace, Chiswick

Floor Plan

Approximate gross internal area
72 sq m / 780 sq ft

Brackley Terrace, W4

Approximate Gross Internal Area = 72.5 sq m / 780 sq ft
External WC = 2.2 sq m / 24 sq ft
Total = 74.7 sq m / 804 sq ft

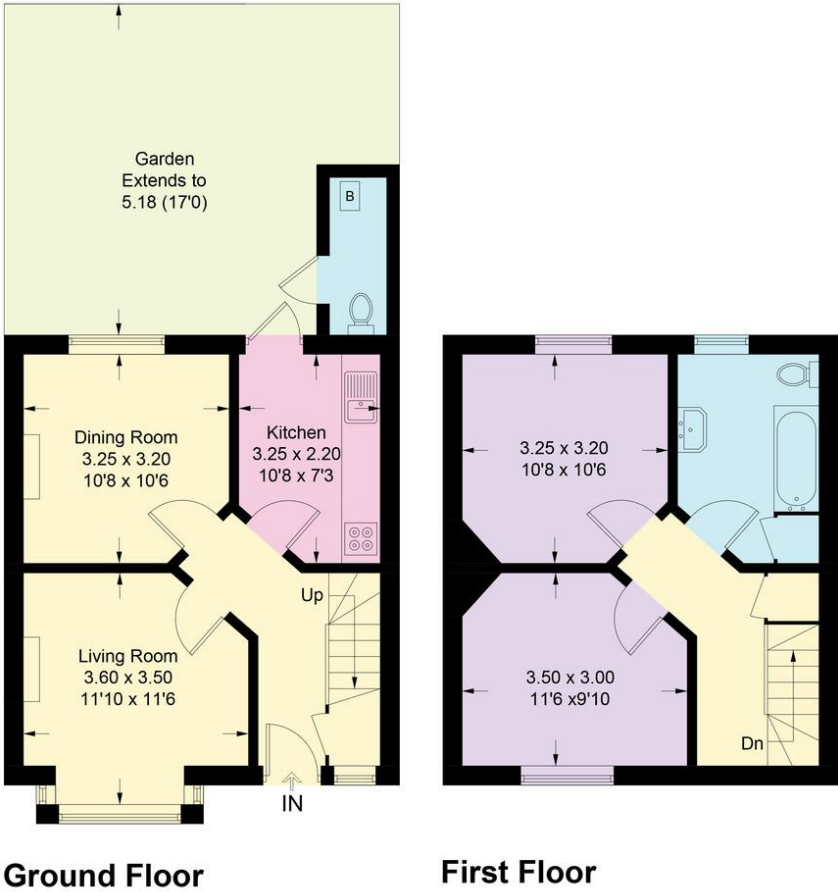


Illustration for identification purposes only, measurements are approximate, not to scale. Fourlabs.co © (ID1185689)

EPC

