



**SALES**

**LETTINGS**

**MANAGEMENT**

[chiswick@tatepartnership.co.uk](mailto:chiswick@tatepartnership.co.uk)

**020 8996 0000**

**TATEPARTNERSHIP.CO.UK**



**Burlington Road, W4**

**£1,465 pcm**

"Use of Communal Gardens".

A delightful ground floor Studio Apartment, located in a quiet residential road, close to Gunnersbury tube station. The property has an attractive studio room, separate kitchen with washer/dryer, dishwasher and oven. The living space has storage and breakfast bar. Separate bathroom with bath and overhead shower. Make good use of the communal gardens. Burlington Road is just off Chiswick High Road, with great shopping, dining and transport facilities. Available early September, Unfurnished.

Approximate Gross Internal Area = 25.6 sq m / 275 sq ft

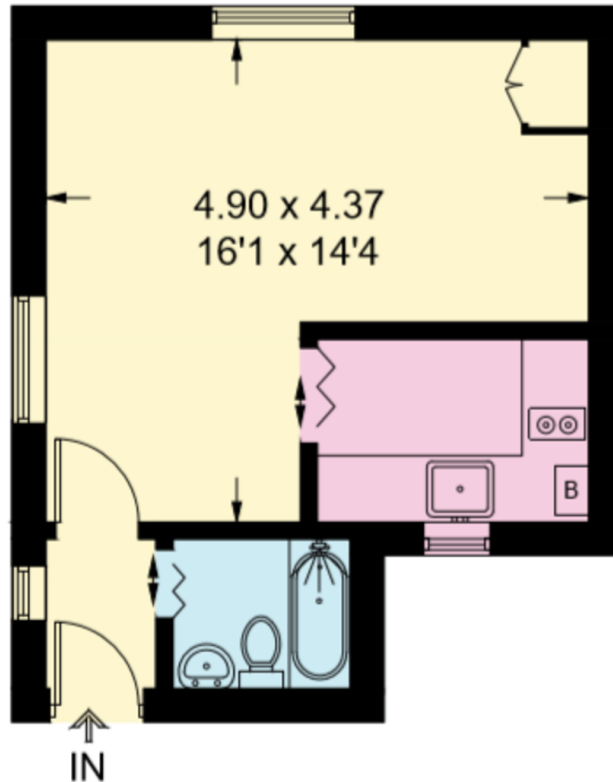


Illustration for identification purposes only, measurements are approximate, not to scale. floorplansUsketch.com © (ID841440)

## EPC

