



SALES

LETTINGS

MANAGEMENT

chiswick@tatepartnership.co.uk

020 8996 0000

TATEPARTNERSHIP.CO.UK



Coombe Road, Chiswick

£2,350 pcm

****Private Roof Terrace**.**

A delightful bright split level duplex apartment, occupying the two top floors of this Victorian property and benefiting from a private South Facing Roof Terrace. The accommodation, arranged over the first and second floors, comprises: stairs to first floor landing, two double bedrooms, modern fitted kitchen and modern family bathroom. Stairs to the upper floor, with the bright open plan living space with door opening directly onto the Private Roof Terrace. The location is central Chiswick, just a couple of minutes walk to the Chiswick High Road. Turnham Green tube station is about 8 minutes walking. Available mid-late August. Unfurnished.

Coombe Road, Chiswick

Floor Plan

Approximate gross internal area
63 sq m / 681 sq ft

Coombe Road, W4

Approximate Gross Internal Area = 63.3 sq m / 681 sq ft
(Including Eaves Storage)

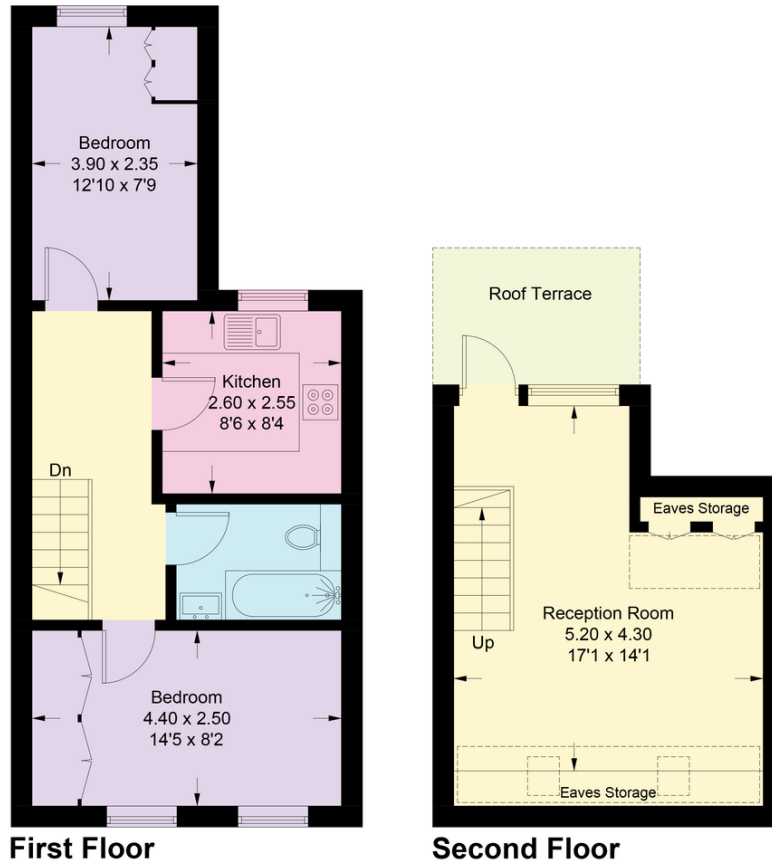


Illustration for identification purposes only, measurements are approximate, not to scale. floorplansUsketch.com © (ID978878)

EPC

