



**SALES**

**LETTINGS**

**MANAGEMENT**

[chiswick@tatepartnership.co.uk](mailto:chiswick@tatepartnership.co.uk)

**020 8996 0000**

**TATEPARTNERSHIP.CO.UK**



**Chiswick High Road, W4**

**£1,595 pcm**

A well presented, first floor Studio Apartment located in central Chiswick, perfect for immediate access to all local amenities. The Studio accommodation extends to 363sq/ft and comprises; light, bright Studio room with vaulted ceiling, open plan to the kitchen, but with separate shower room. The flat also has a small balcony by the front door. Positioned in central Chiswick, just off Chiswick High Road. Numerous shops, bars and restaurants are on your doorstep, as well as Turnham Green tube station just around the corner. Available Now, Part Furnished or Unfurnished.

### Chiswick High Road

Approximate Gross Internal Area = 33.7 sq m / 363 sq ft

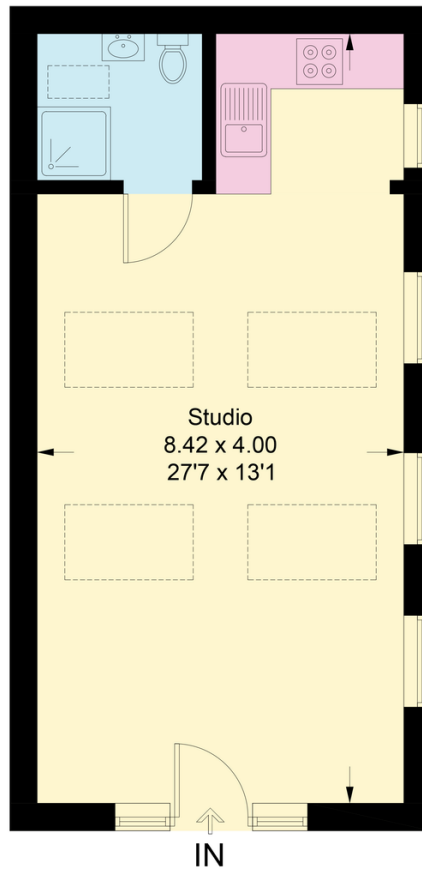


Illustration for identification purposes only, measurements are approximate, not to scale. floorplansUsketch.com © (ID1088528)

## EPC

