

Cambridge Square, W2

£3,300 Per week

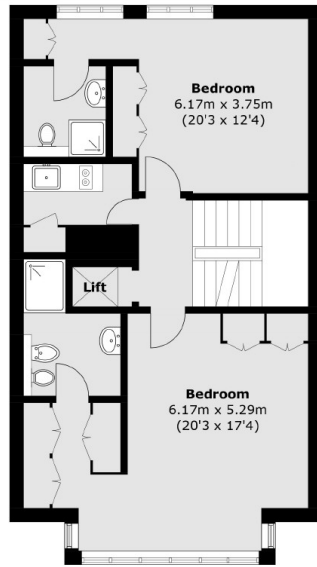
A recently refurbished five bedroom terraced house in Cambridge Square situated in the quiet Hyde Park Estate. The house has an eat in kitchen, two living rooms, a private garage and private balcony. This is spread across 4 floors, all with lift access and a large winter garden, with a private terrace.

Cambridge Square is a popular location near to Hyde Park and within close proximity to the numerous facilities in Connaught Village, Edgware Road and Oxford Street.

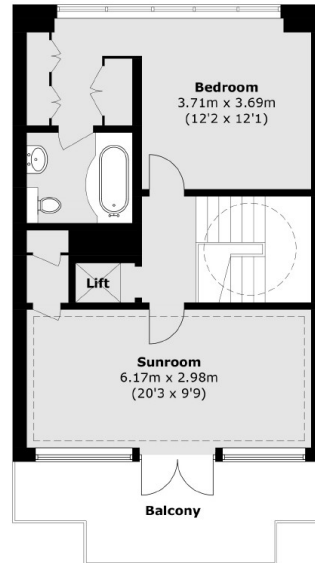
Features

- Five Double Bedrooms
- Two Receptions
- Private Garage
- Private Balcony
- Winter Garden
- Lift
- Unfurnished

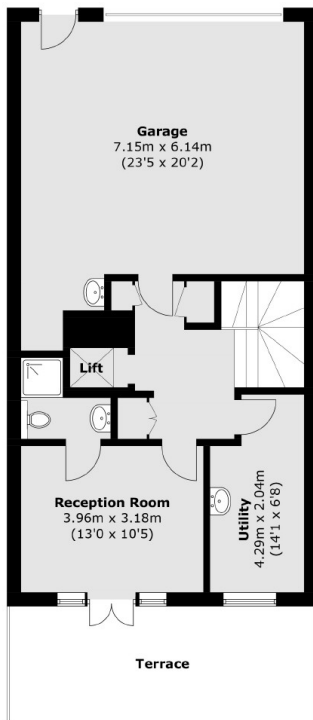
Cambridge Square, London, W2



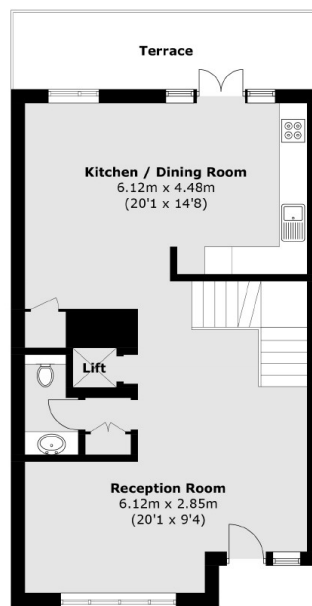
Second Floor



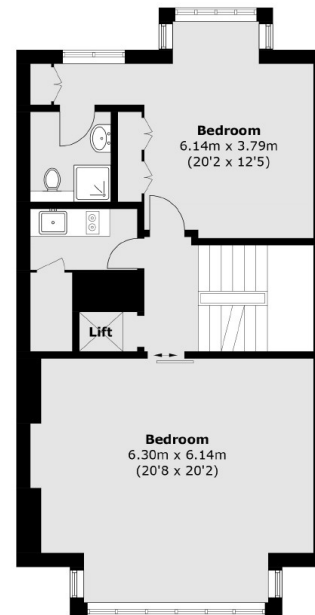
Third Floor



Lower Ground Floor



Ground Floor



First Floor

Total area (approx.): 338.2 sq. m (3,640.3 sq. ft)
Balcony / Terrace: 39.9 sq. m (429.5 sq. ft)