



Craven Terrace, W2

£875,000

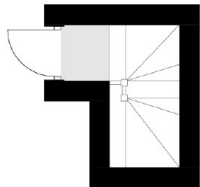
A split level top floor flat with a private roof terrace in a Victorian conversion. With two principal bedrooms and a study or dressing room, two bathrooms and an open plan kitchen and reception room, this is an ideal property for anyone seeking a spacious apartment in the heart of Paddington. Offers in Excess of £875,000.

Craven Terrace is within walking distance of Paddington Station, giving easy access across and out of London and to Heathrow. The green spaces of Hyde Park are close by, as are a wide choice of local shops, pubs and restaurants.

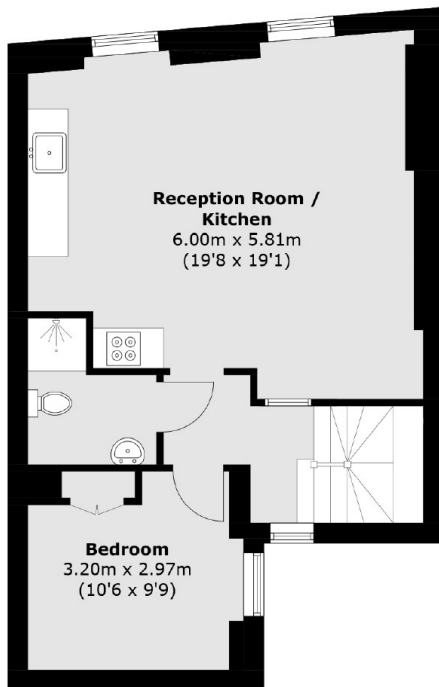
Features

OFFERS IN EXCESS OF
£875,000
Two / Three Bedrooms
Two Bathrooms
Open Plan
Private Roof Terrace

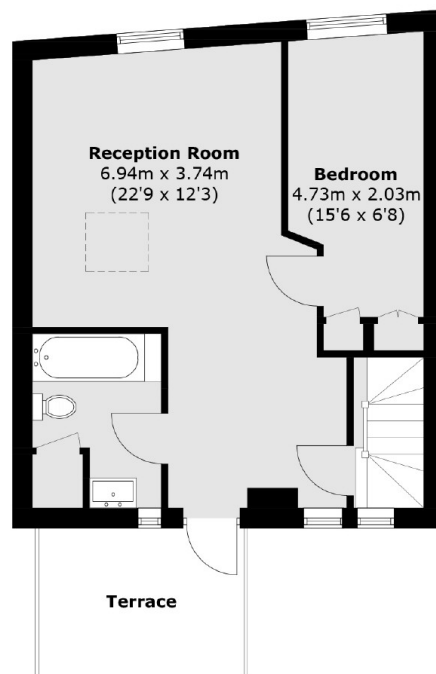
Craven Terrace, London, W2



Second Floor



Third Floor



Fourth Floor

Total area (approx.): 92.3 sq. m (993.4 sq. ft)
(Terrace) : 6.7 sq. m (72.1 sq. ft)