



Gloucester Square, W2

£2,192 Per week

Located within the sought-after Chelwood House on Gloucester Square, this beautifully presented three-bedroom, one-bathroom apartment offers an ideal blend of space, comfort, and convenience in the heart of London's W2. The property is presented furnished and recently refurbished.

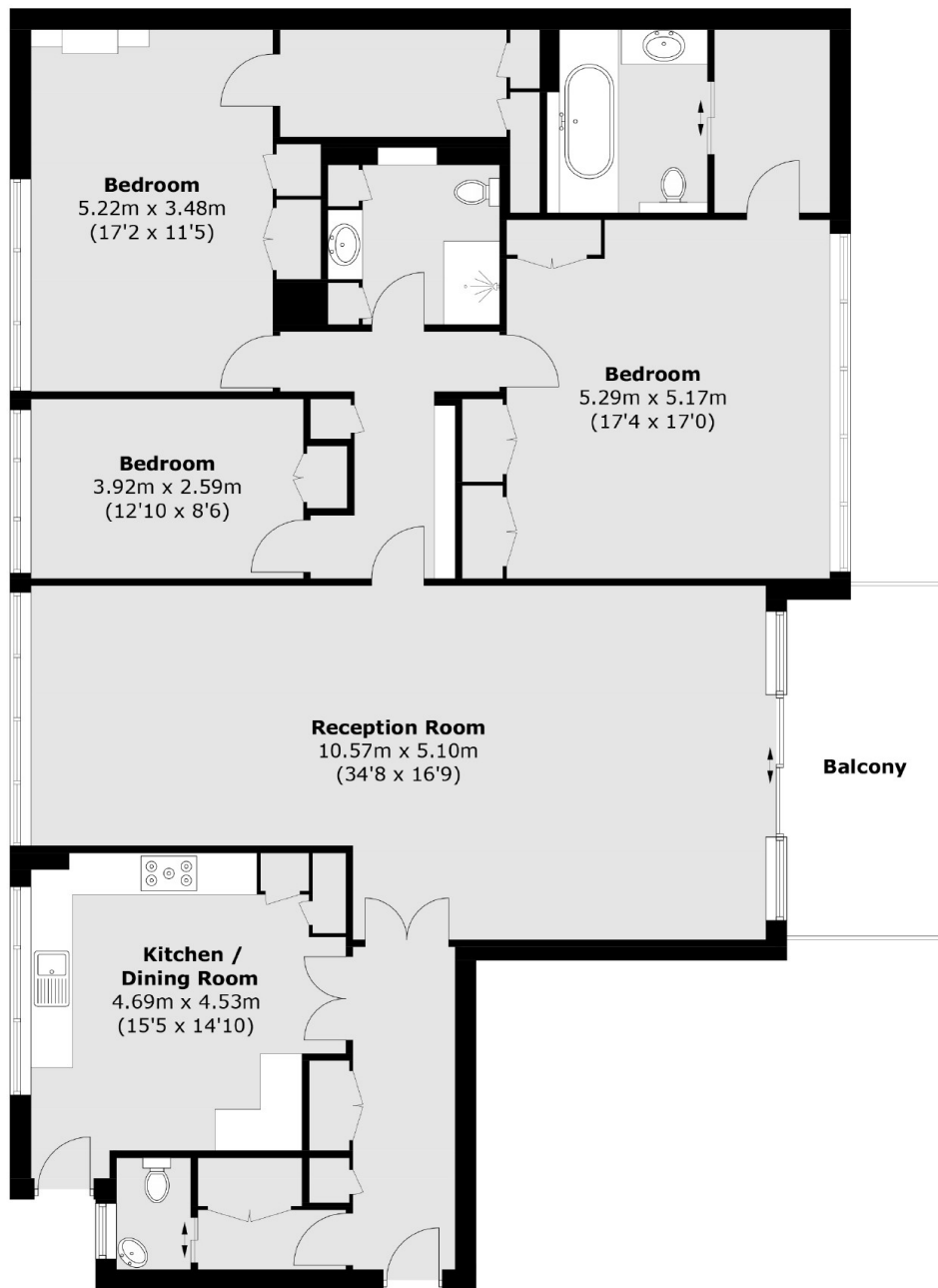
Chelwood House is a well-maintained, portered building with lift access, ideally situated moments from Hyde Park, Paddington Station (Elizabeth Line, Heathrow Express), and the vibrant amenities of Connaught Village and Little Venice.

Features

Three spacious bedrooms

Newly Refurbished
Secure portered block

Gloucester Square, London, W2



First Floor

Total area (approx.) : 173.1 sq. m (1,863.4 sq. ft)
Balcony : 11.3 sq. m (121.6 sq. ft)