



## Inverness Terrace, W2

### £850,000

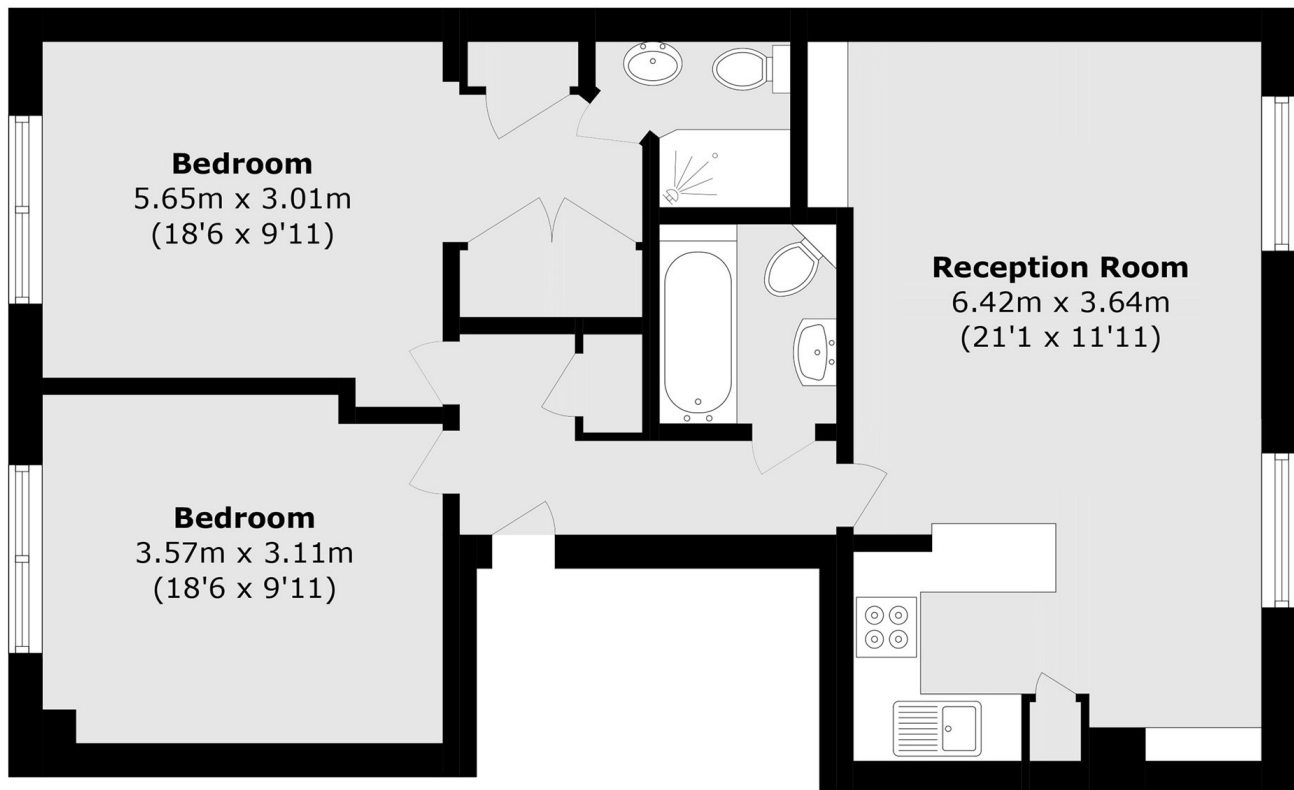
A two double bedroom, two bathroom (one en suite) apartment, on the top floor of a white stucco fronted building. The open plan reception room has an open plan kitchen, room for dining and has far reaching Westerly views.

Inverness Terrace is opposite the green spaces of Hyde Park and is close to Queensway and Bayswater with convenient transport links, shops, restaurants and the ongoing regeneration of Whiteleys and surrounding area.

### Features

- Two Double Bedrooms
- Two Bathrooms
- Share of Freehold
- Top Floor Flat
- White Stucco Fronted
- Near Queensway Regeneration

# Inverness Terrace, London, W2



Total area (approx.): 61.8 sq. m (665.2 sq. ft)