



## Sussex Place, W2

£750 Per week

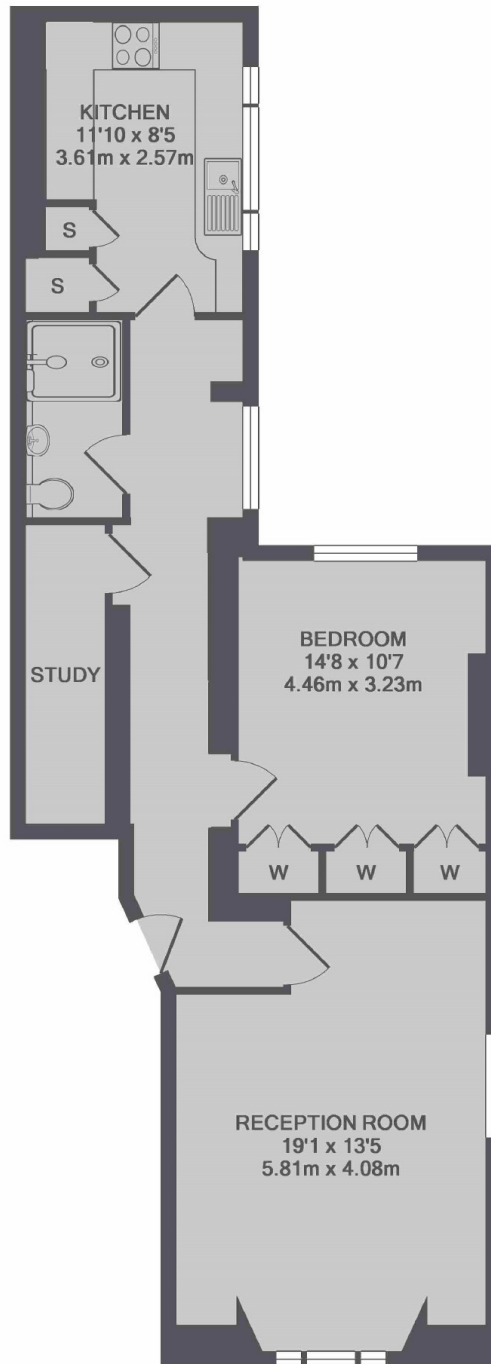
A spacious one bedroom apartment occupying the entire ground floor of a period terraced house. The property has been newly refurbished and features original 18th century shutters, marble fire place and wood flooring.

The nearest stations are Lancaster Gate and Paddington for London Underground, National Rail and Heathrow Express. The property is also within easy reach of Hyde Park and the charming boutiques and bistros of Connaught Village.

### Features

- One Bedroom
- Ground Floor
- Separate Kitchen
- Wood Floors
- Ample Storage
- Hyde Park

# Sussex Place, London, W2



TOTAL APPROX. FLOOR AREA 737 SQ.FT. (68.5 SQ.M.)

## Dexters

Hyde Park and Bayswater  
4-5 Spring Street  
London  
W2 3RA  
Lettings  
020 7298 1560

Energy Rating: D. We aim to make our particulars both accurate and reliable. However they are not guaranteed; nor do they form part of an offer or contract. If you require clarification on any points then please contact us, especially if you're traveling some distance to view. Please note that appliances and heating systems have not been tested and therefore no warranties can be given as to their good working order.

 **RICS** | Regulated  
Estate Agent  
and Letting Agent

[dexters.co.uk](https://www.dexters.co.uk)