



Porchester Road, W2

£346 Per week

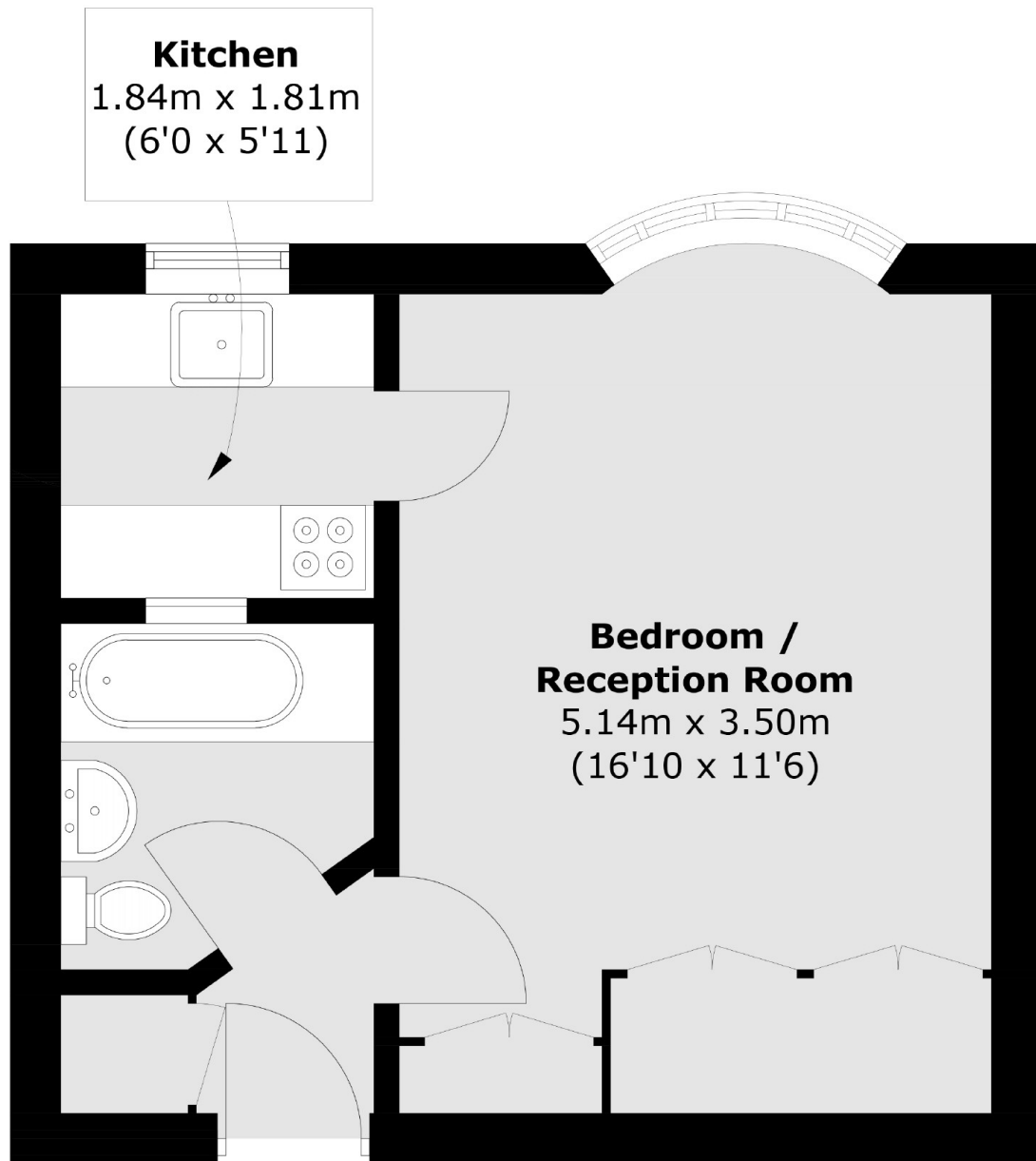
A studio apartment in a portered purpose built block. The property has been newly refurbished, has a double bed, built in storage and a separate kitchen.

Peters Court is close by the the boutiques and bistros of Westbourne Grove, with easy access to both Queensway and Paddington Stations and the A40 for motorists.

Features

- Double Bedroom
- Portered Block
- Newly Refurbished
- Separate Kitchen
- Hyde Park

Porchester Road, London, W2



Fourth Floor

Total area (approx.): 27.1 sq. m (292 sq. ft)

Dexters

Hyde Park and Bayswater
4-5 Spring Street
London
W2 3RA
Lettings
020 7298 1560

Energy Rating: . We aim to make our particulars both accurate and reliable. However they are not guaranteed; nor do they form part of an offer or contract. If you require clarification on any points then please contact us, especially if you're traveling some distance to view. Please note that appliances and heating systems have not been tested and therefore no warranties can be given as to their good working order.

 **RICS** | Regulated
Estate Agent
and Letting Agent

dexters.co.uk