



Gloucester Terrace, W2

£525 Per week

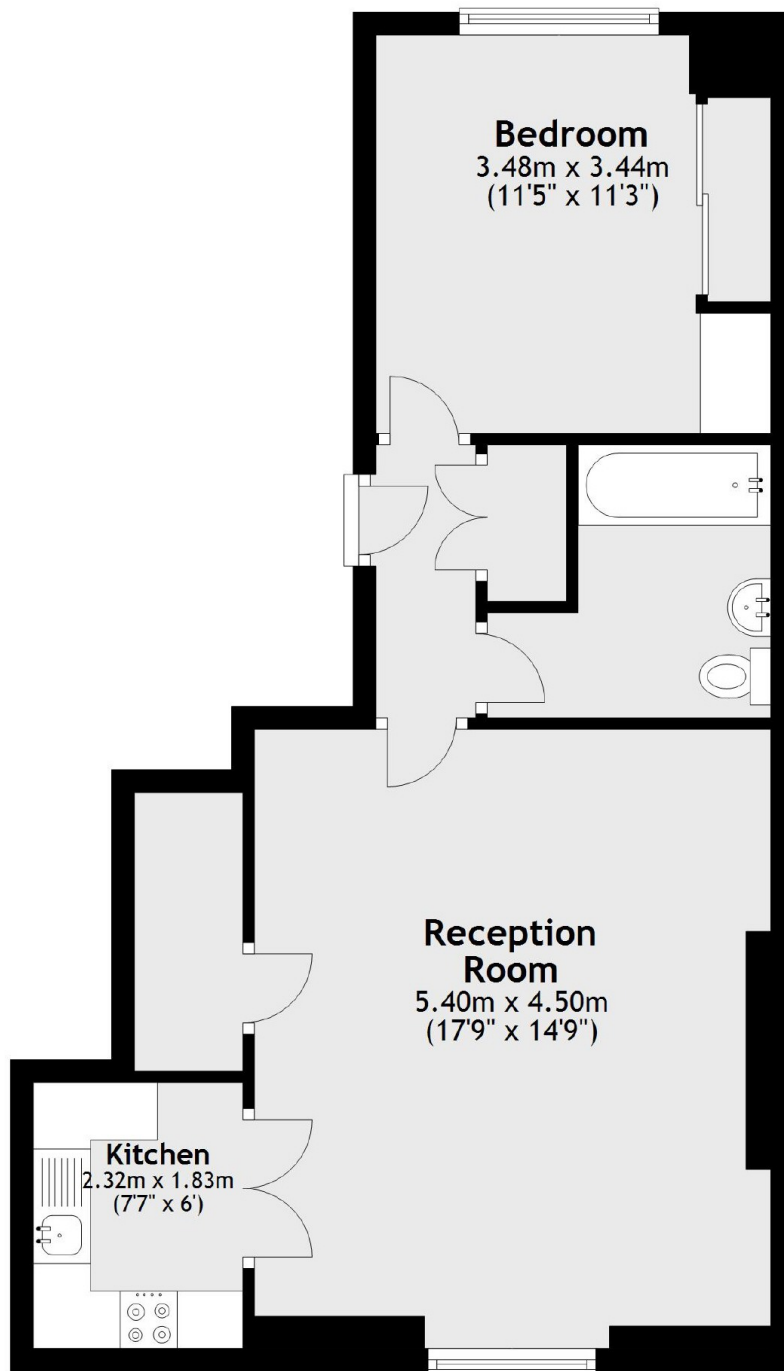
A large ground floor one bedroom apartment with wooden floors in a Grade II listed building near Hyde Park. The property has a semi open plan kitchen, a good size bedroom and additional fitted storage in the hallway.

Gloucester Terrace is ideally situated between the shops and restaurants of Westbourne Grove including a large Waitrose supermarket and Lancaster Gate underground and Paddington station.

Features

- Ground Floor
- One Bedroom
- Large Reception
- Grade II Listed
- Wood Floors
- Lancaster Gate Underground

Gloucester Terrace,
London, W2



Total area: approx. 52.3 sq. metres (562.7 sq. feet)

Dexters

Hyde Park and Bayswater
4-5 Spring Street
London
W2 3RA
Lettings
020 7298 1560

Energy Rating: D. We aim to make our particulars both accurate and reliable. However they are not guaranteed; nor do they form part of an offer or contract. If you require clarification on any points then please contact us, especially if you're traveling some distance to view. Please note that appliances and heating systems have not been tested and therefore no warranties can be given as to their good working order.

 **RICS** | Regulated
Estate Agent
and Letting Agent

[dexters.co.uk](https://www.dexters.co.uk)