



Bathurst Street, W2

£2,076 Per week

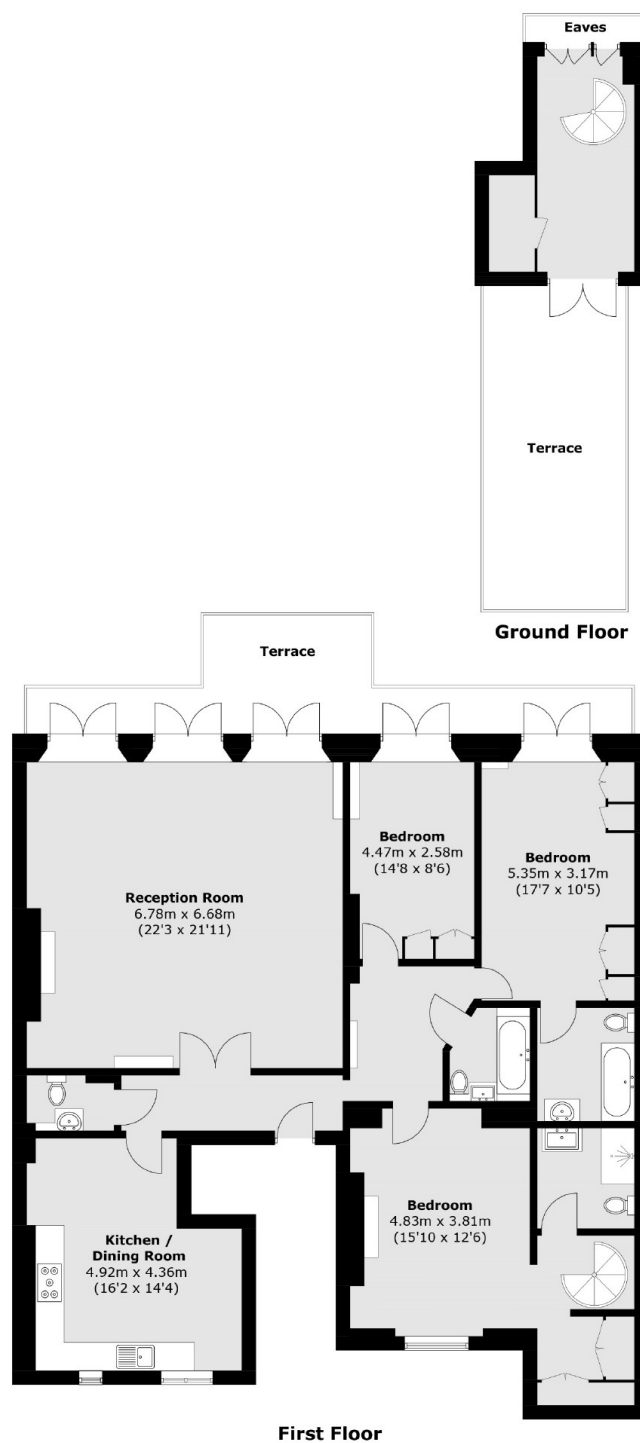
Located on the first floor of a Grade II Listed building, this impressive three-bedroom, three-and-a-half bathroom lateral apartment benefits from a comprehensive renovation carried out approximately ten years ago.

Excellent transportation links, including Lancaster Gate (Central Line) underground station and Paddington Station, with access to Heathrow Express, Network Rail and underground services.

Features

- 3 bedroom
- 3 bath
- Wooden Floor
- Private Terrace
- High Ceilings

Bathurst Street,
London, W2



Total area (approx.): 161.3 sq. m (1736.4 sq. ft)
Terrace: 38.7 sq. m (416.6 sq. ft)

Dexters

Hyde Park and Bayswater
4-5 Spring Street
London
W2 3RA
Lettings
020 7298 1560

Energy Rating: . We aim to make our particulars both accurate and reliable. However they are not guaranteed; nor do they form part of an offer or contract. If you require clarification on any points then please contact us, especially if you're traveling some distance to view. Please note that appliances and heating systems have not been tested and therefore no warranties can be given as to their good working order.

 **RICS** | Regulated
Estate Agent
and Letting Agent

dexters.co.uk