



## Queensborough Terrace, W2

£474,950

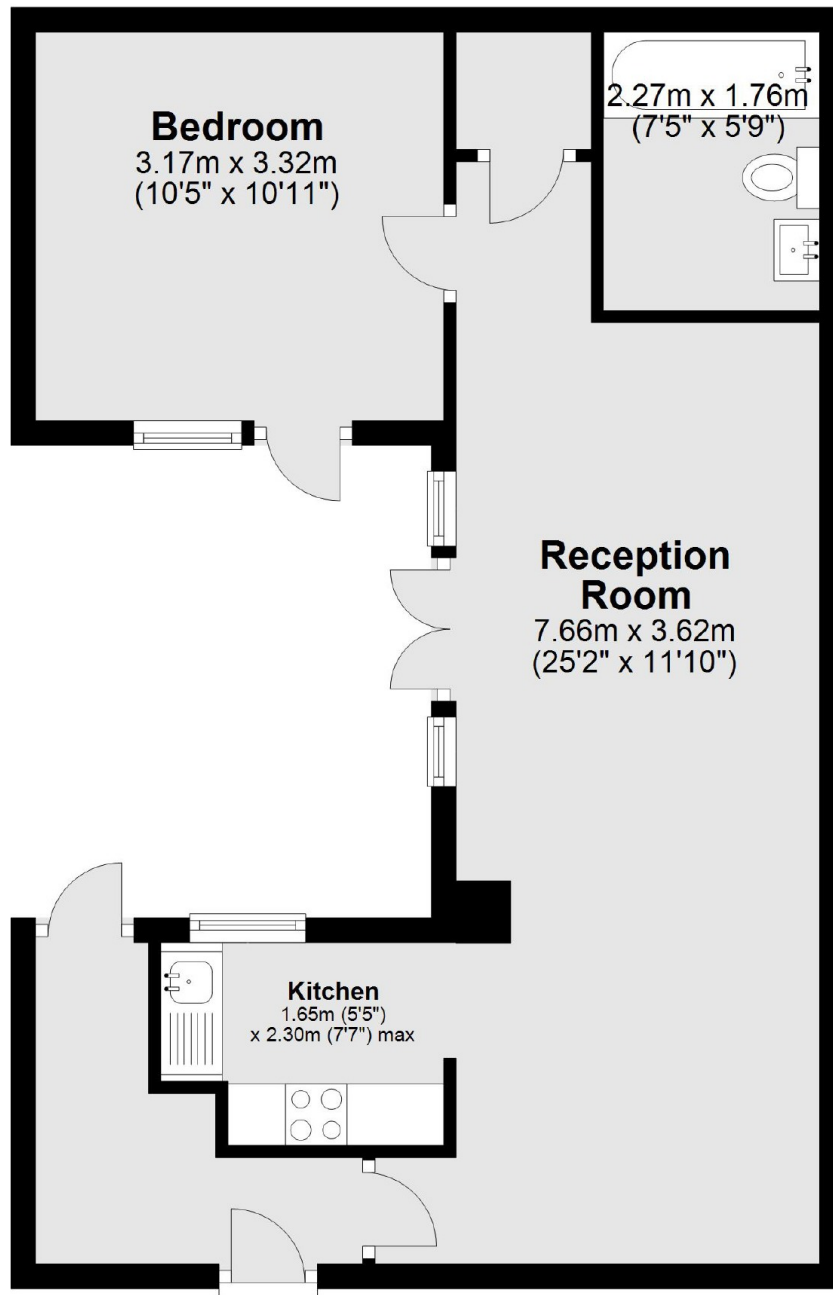
A one double bedroom garden flat in a white stucco fronted conversion. With an open plan kitchen and reception room and presented in good order, this is ideal for a first time buyer.

Queensborough Terrace is a popular road opposite Hyde Park and close to the busy transport hub in Paddington and with plenty of shops, bars and restaurants in Bayswater and Notting Hill.

### Features

- Double Bedroom
- Open Plan
- Double Bedroom
- Share Of Freehold
- Good Condition
- Hyde Park

# Queensborough Terrace, London, W2



Total area: approx. 49.4 sq. metres (531.6 sq. feet)

**Dexters**

Hyde Park and Bayswater  
4-5 Spring Street  
London  
W2 3RA  
Sales  
020 7298 1550

Energy Rating: C. We aim to make our particulars both accurate and reliable. However they are not guaranteed; nor do they form part of an offer or contract. If you require clarification on any points then please contact us, especially if you're traveling some distance to view. Please note that appliances and heating systems have not been tested and therefore no warranties can be given as to their good working order.

**RICS** | Regulated  
Estate Agent  
and Letting Agent

[dexters.co.uk](http://dexters.co.uk)