



## Lancaster Terrace, W2

£600 Per week

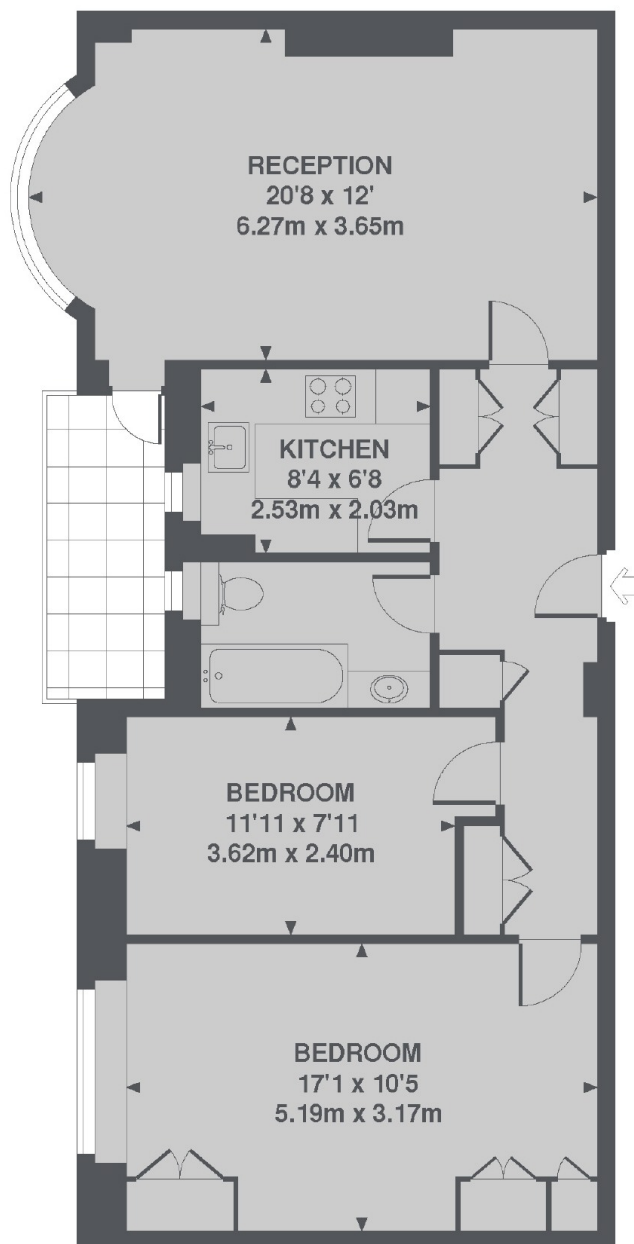
A spacious and recently refurbished two bedroom flat in a portered block opposite Hyde Park. With lift access, a private balcony and hot water and heating included in the rent, the two bedrooms are both large doubles.

On the door step of Lancaster Gate tube station and close to Paddington, The West End and Notting Hill are within easy reach.

### Features

- Two Bedrooms
- Wood Floors
- Lift Access
- Balcony
- Portered
- Space To Dine

# Lancaster Terrace, London, W2



2ND FLOOR

TOTAL APPROX. FLOOR AREA 737 SQ. FT. (68.5 SQ. M.)

## Dexters

Hyde Park and Bayswater  
4-5 Spring Street  
London  
W2 3RA  
Lettings  
020 7298 1560

Energy Rating: C. We aim to make our particulars both accurate and reliable. However they are not guaranteed; nor do they form part of an offer or contract. If you require clarification on any points then please contact us, especially if you're traveling some distance to view. Please note that appliances and heating systems have not been tested and therefore no warranties can be given as to their good working order.

 **RICS** | Regulated  
Estate Agent  
and Letting Agent

[dexters.co.uk](https://dexters.co.uk)