



## Queensborough Terrace, W2

£1,269 Per week

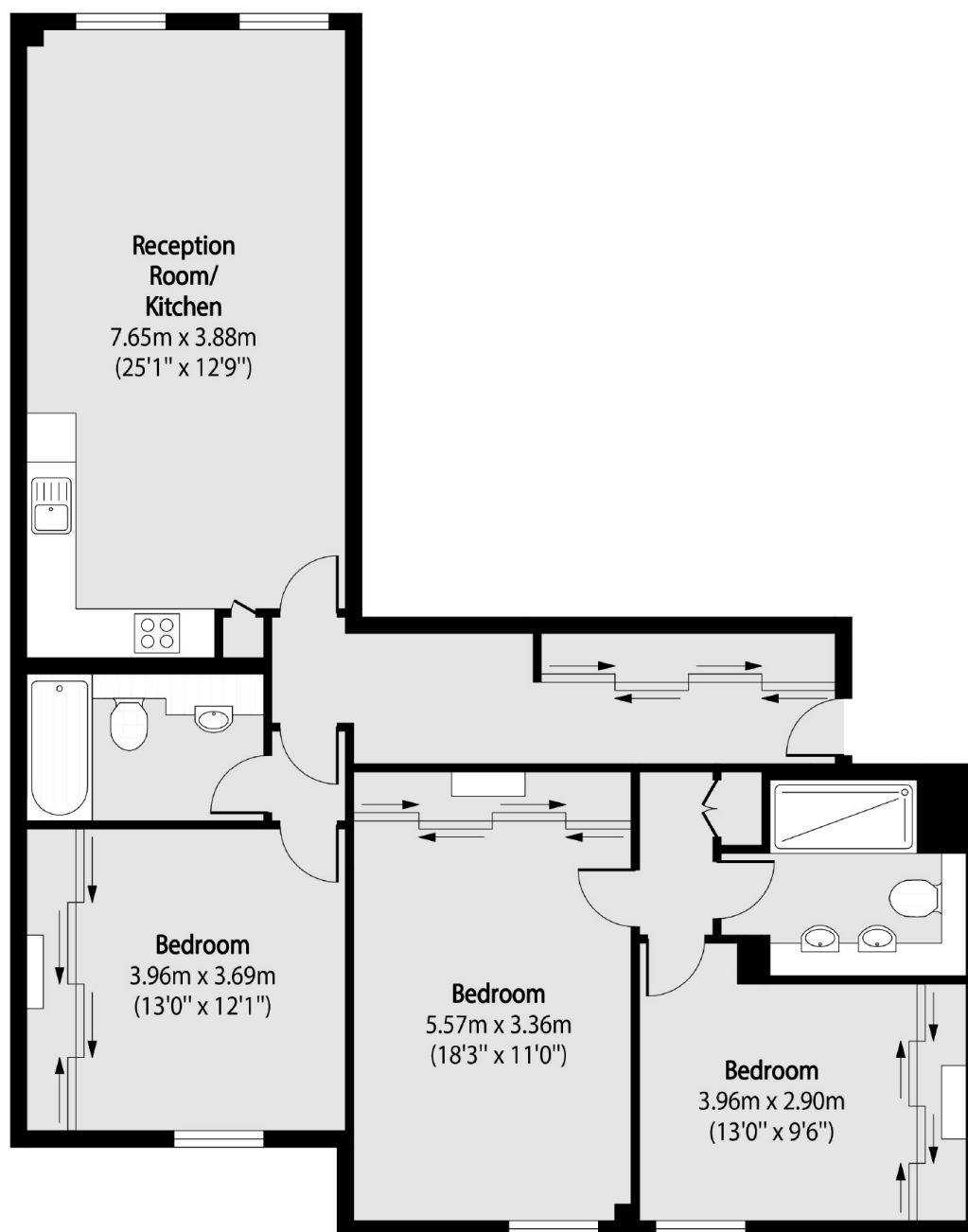
A spacious three double bedroom apartment with two bathrooms and a large open plan reception. With space to dine, or to entertain, the property would ideally suit those seeking space and spec in a great location.

Moments from the green open spaces of Hyde Park and within easy reach of Queensway and Notting Hill, the property is well connected for local tubes and transport.

### Features

- Three Double Bedrooms
- Two Bathrooms
- Great Location
- Wooden Floors
- Modern
- Lift Access

# Queensborough Terrace, London, W2



Total area (approx): 103.80 sq m (1117 sq. ft)

## Dexters

Hyde Park and Bayswater  
4-5 Spring Street  
London  
W2 3RA  
Lettings  
020 7298 1560

Energy Rating: C. We aim to make our particulars both accurate and reliable. However they are not guaranteed; nor do they form part of an offer or contract. If you require clarification on any points then please contact us, especially if you're traveling some distance to view. Please note that appliances and heating systems have not been tested and therefore no warranties can be given as to their good working order.

 **RICS** | Regulated  
Estate Agent  
and Letting Agent

[dexters.co.uk](https://www.dexters.co.uk)