



## Rainsford Street, W2

£1,269 Per week

A newly built mews house on a private road close to Hyde Park. The property is finished to a high standard including hard wood herringbone floors, bespoke designer kitchen, bathrooms underfloor heating and oak featured staircase.

Rainsford Street is a private road, a short distance from Connaught Village and Hyde Park. Residents can enjoy easy access to local transport links including Edgware Road underground station and Paddington Mainline.

### Features

- New Build
- Mews House
- Open Plan
- Parking
- Hyde Park
- Elizabeth Line

# Rainsford Street, London, W2

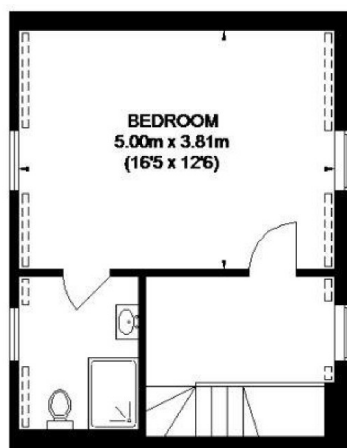
## RAINSFORD STREET



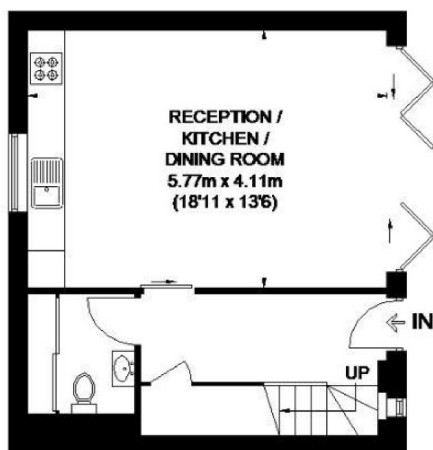
APPROXIMATE GROSS INTERNAL AREA  
(EXCLUDING REDUCED HEADROOM)  
GROUND FLOOR = 422 SQ. FT. (39.19 SQ. M.)  
FIRST FLOOR = 396 SQ. FT. (36.8 SQ. M.)  
SECOND FLOOR = 333 SQ. FT. (30.9 SQ. M.)  
REDUCED HEADROOM  
11 SQ. FT. (1.11 SQ. M.)  
TOTAL = 1162 SQ. FT. (108.0 SQ. M.)



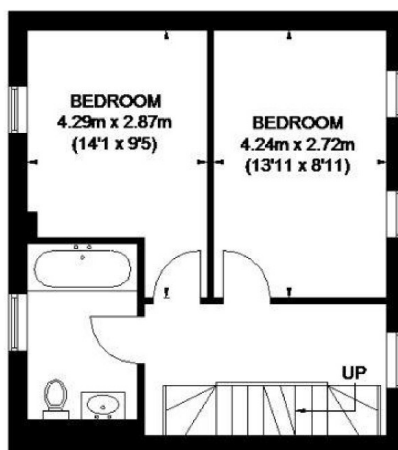
This plan is for layout guidance only. Not drawn to scale unless stated. Windows and door openings are approximate. Whilst every care is taken in the preparation of this plan, please check all dimensions, shapes and compass bearings before making any decisions reliant upon them. Please be advised that Hamptons International / our agents have not seen or reviewed any building regulations or planning permission in relation to works carried out to the property (00514413)



**SECOND FLOOR**



**GROUND FLOOR**



**FIRST FLOOR**

# Dexters

Hyde Park and Bayswater  
4-5 Spring Street  
London  
W2 3RA  
Lettings  
020 7298 1560

Energy Rating: C. We aim to make our particulars both accurate and reliable. However they are not guaranteed; nor do they form part of an offer or contract. If you require clarification on any points then please contact us, especially if you're traveling some distance to view. Please note that appliances and heating systems have not been tested and therefore no warranties can be given as to their good working order.



dexters.co.uk