



Hermitage Street, W2

£525,000

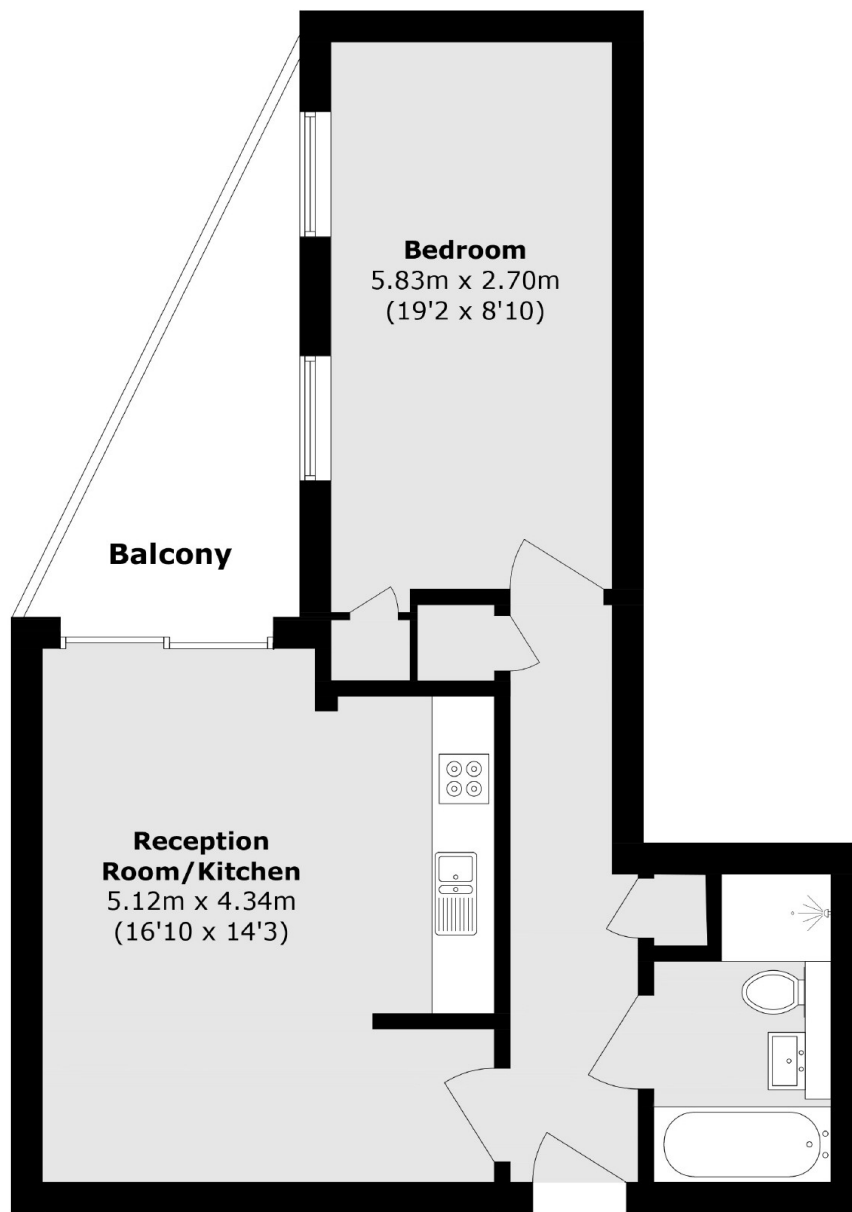
A spacious one double bedroom apartment in a modern portered building with a private balcony. There is an open plan reception room with room to dine, wooden flooring throughout and ample storage.

Paddington Basin has a number of shops, bars and restaurants nearby and is close to the A40 for motorists. Paddington Station is within walking distance, giving convenient access across London and to Heathrow.

Features

- One Double Bedroom
- Open Plan
- Private Balcony
- Communal Roof Terrace
- Lift
- Concierge

Hermitage Street, London, W2



Total area (approx.): 50.5 sq. m (543.5 sq. ft)
Balcony area (approx.): 7.1 sq. m (76.4 sq. ft)

Dexters

Hyde Park and Bayswater
4-5 Spring Street
London
W2 3RA
Sales
020 7298 1550

Energy Rating: C. We aim to make our particulars both accurate and reliable. However they are not guaranteed; nor do they form part of an offer or contract. If you require clarification on any points then please contact us, especially if you're traveling some distance to view. Please note that appliances and heating systems have not been tested and therefore no warranties can be given as to their good working order.

 **RICS** | Regulated
Estate Agent
and Letting Agent

[dexters.co.uk](https://www.dexters.co.uk)