



Gloucester Terrace, W2

£1,730 Per week

Dexters



Gloucester Terrace, W2

A superb penthouse located on the top floor of a purpose built block. The property has been finished to very high standard throughout and benefits from a spacious reception/dining room that leads on to a private wraparound terrace.

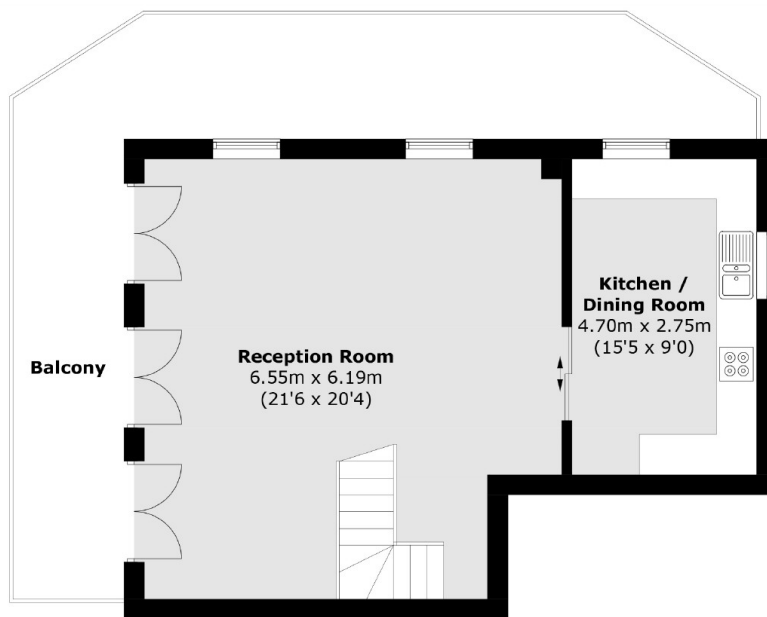
Gloucester Terrace is a popular address offering convenient access to Lancaster Gate underground (Central line) and Paddington station (Heathrow Express, Elizabeth Line, Hammersmith & City). A variety of renowned amenities are close by at Westbourne Grove.

Features

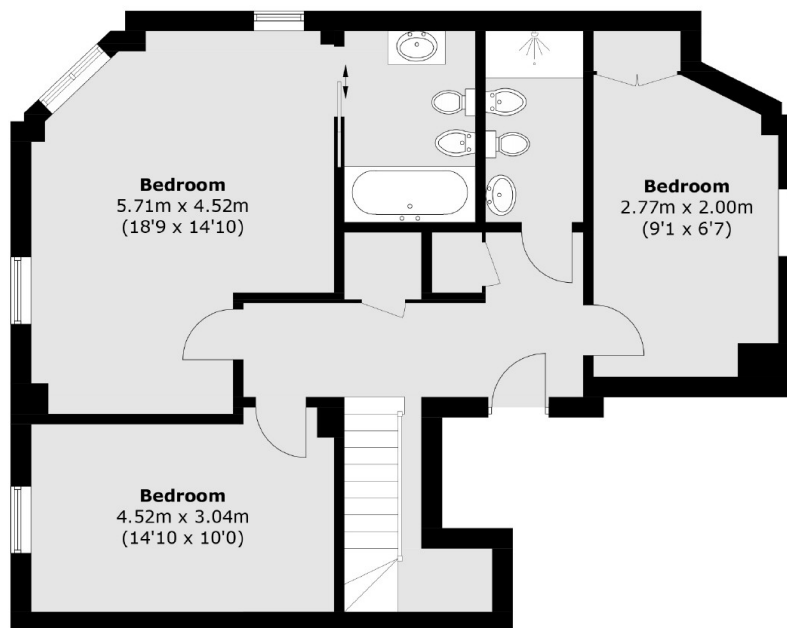
- Penthouse apartment
- Wrap around terrace
- Architecturally designed
- Built In Storage
- Lift Access



Gloucester Terrace, London, W2



Fifth Floor



Fourth Floor

Total area (approx.): 129.3 sq. m (1,391.8 sq. ft)

Balcony (approx.): 29.3 sq. m (315.4 sq. ft)