



Porchester Square, W2

£577 Per week

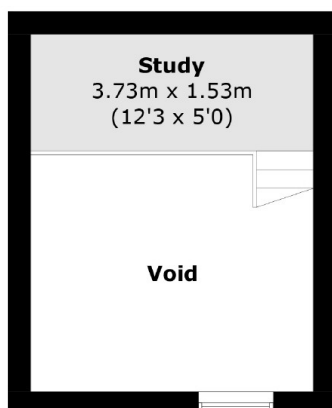
A modern one bedroom apartment overlooking the gated communal gardens close to Royal Oak Station. The property has a large reception room that is open to the modern kitchen and a spacious bedroom with mezzanine storage.

Porchester Square is located close to Royal Oak, Queensway and Bayswater Stations as well as supermarkets and restaurants.

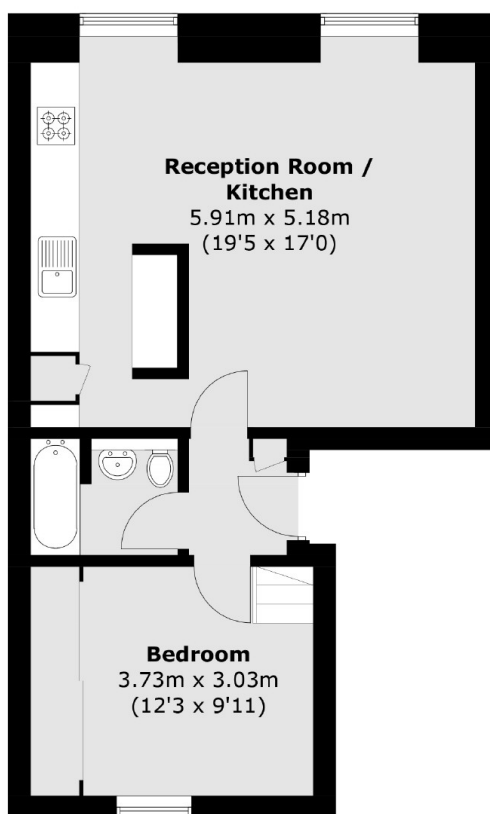
Features

- One Bedroom
- Modern
- Wooden Flooring
- Spacious
- Mezzanine Storage
- Garden Views

Porchester Square, London, W2



Mezzanine



Ground Floor

Total area (approx.): 54.8 sq. m (589.8 sq. ft)
(Excluding Void)