

Porchester Place, W2

£692 Per week

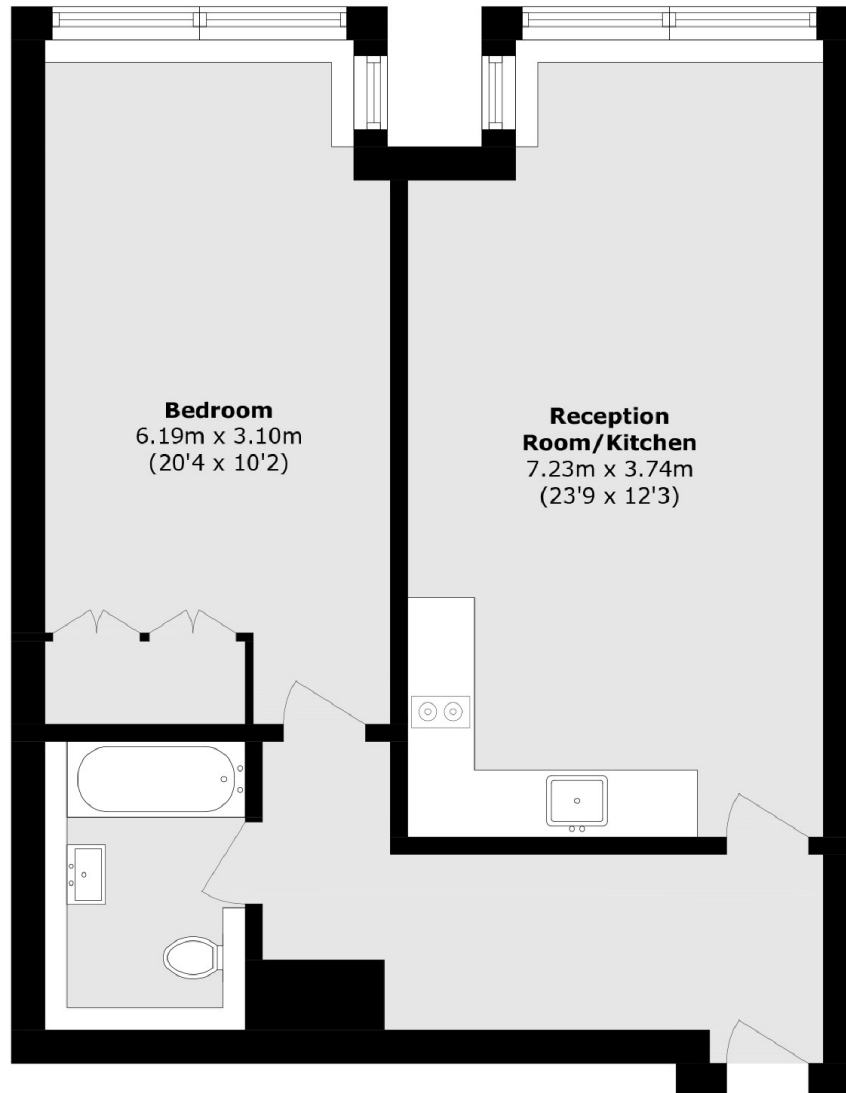
This spacious one-bedroom apartment boasts stunning views and is filled with natural light. Finished to a high standard and previously occupied by the landlord, the property features a modern kitchen that opens onto a generous living area. The large bedroom includes excellent built-in storage and access to a well-appointed bathroom.

Moments from multiple stations like Paddington, Marble Arch, Edgware Road and Marble Arch. Easy access to Hyde Park and great shopping options on Marylebone High Street and Oxford Street.

Features

- Spacious Bedroom
- Amazing Views
- Modern Kitchen and Bathroom
- 24-hour porter building with Lift
- Open-Plan Reception Kitchen

Porchester Place, London, W2



Total area (approx.): 60.4 sq. m (650.1 sq. ft)