



John Aird Court, W2

£415 Per week

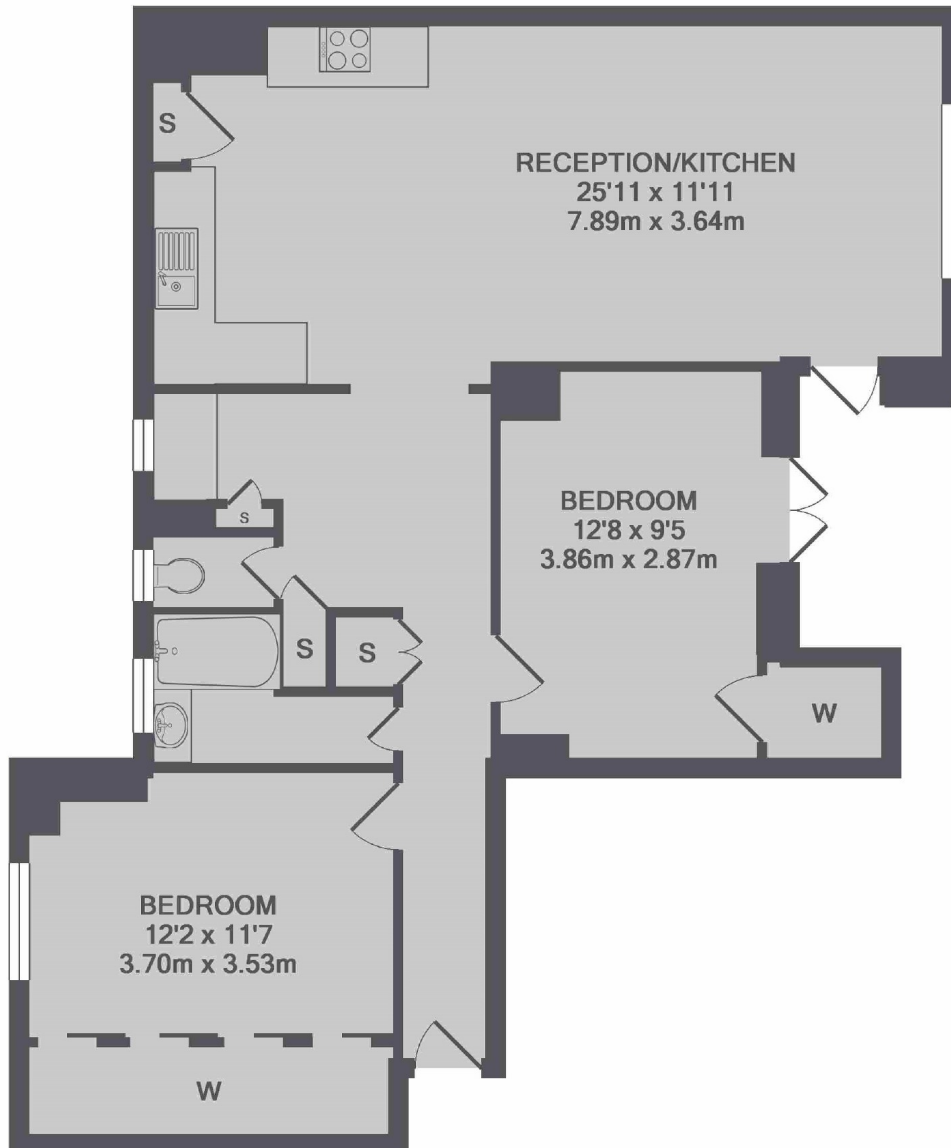
This spacious two bedroom apartment is based in a purpose built block just by Little Venice. The property has a great open plan entertaining space with private balcony and is ideal for two professional sharers.

John Aird Court has the Paddington Basin on its door step, where you are surrounded by shops, cafés, bars and restaurant's.

Features

- Two Bedrooms
- Open Plan Reception
- Bright and Spacious
- Private Balcony
- Lift Access
- Furnished

John Aird Court, London, W2



TOTAL APPROX. FLOOR AREA 717 SQ.FT. (66.6 SQ.M.)

Contact

To arrange a viewing call our office on the number below or visit our website.



Energy Rating: C. We aim to make our particulars both accurate and reliable. However they are not guaranteed; nor do they form part of an offer or contract. If you require clarification on any points then please contact us, especially if you're traveling some distance to view. Please note that appliances and heating systems have not been tested and therefore no warranties can be given as to their good working order.