



Praed Street, W2

£623 Per week

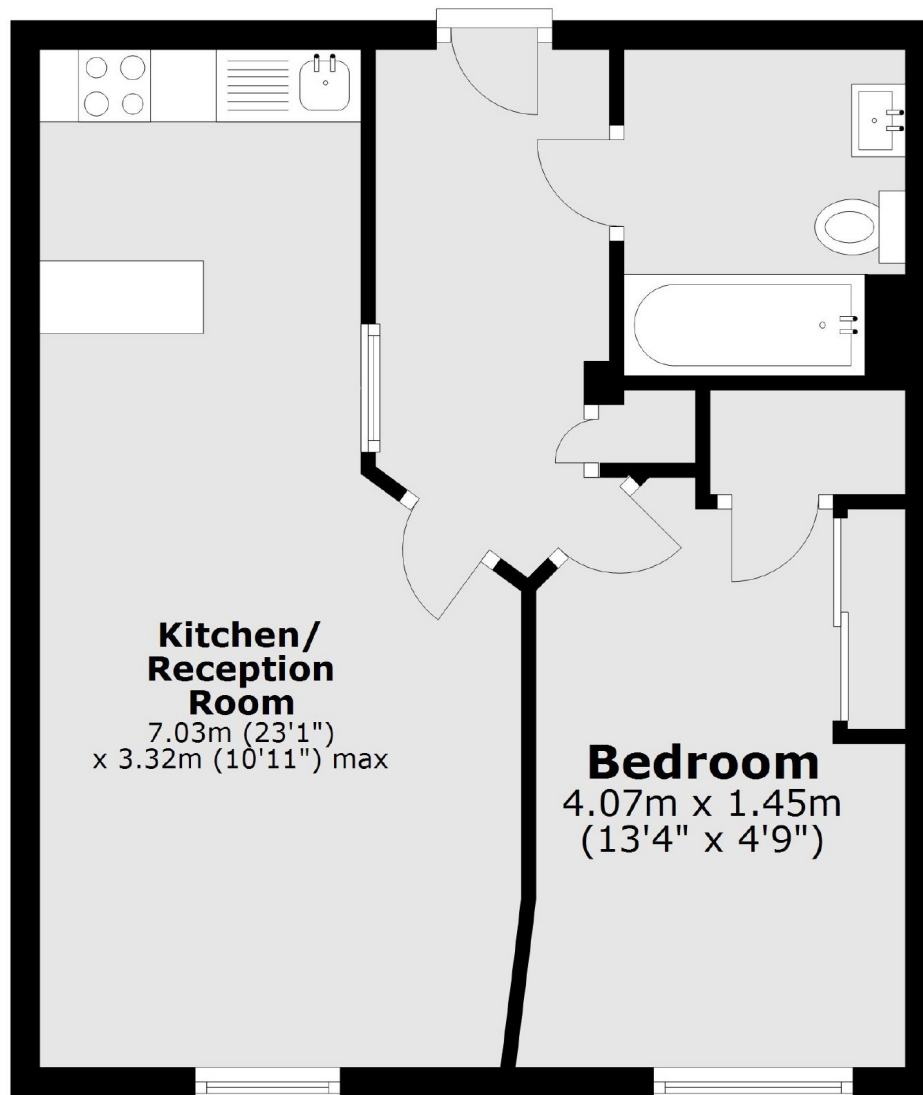
A new build one-bedroom flat on the seventh floor of this modern, portered development. With lift access and additional storage, the property is bright and spacious with secure entry.

The property is moments from local amenities and 0.1 miles from Edgware Road and 0.3 miles from Paddington stations.

Features

Seventh Floor
One Bedroom
Lift Access
New Build
0.1 Miles From Tube
Waterside Development

Praed Street,
London, W2



Total area: approx. 42.0 sq. metres (451.9 sq. feet)

Dexters

Hyde Park and Bayswater
4-5 Spring Street
London
W2 3RA
Lettings
020 7298 1560

Energy Rating: B. We aim to make our particulars both accurate and reliable. However they are not guaranteed; nor do they form part of an offer or contract. If you require clarification on any points then please contact us, especially if you're traveling some distance to view. Please note that appliances and heating systems have not been tested and therefore no warranties can be given as to their good working order.

 **RICS** | Regulated
Estate Agent
and Letting Agent

dexters.co.uk