



## Gloucester Terrace, W2

£495,000

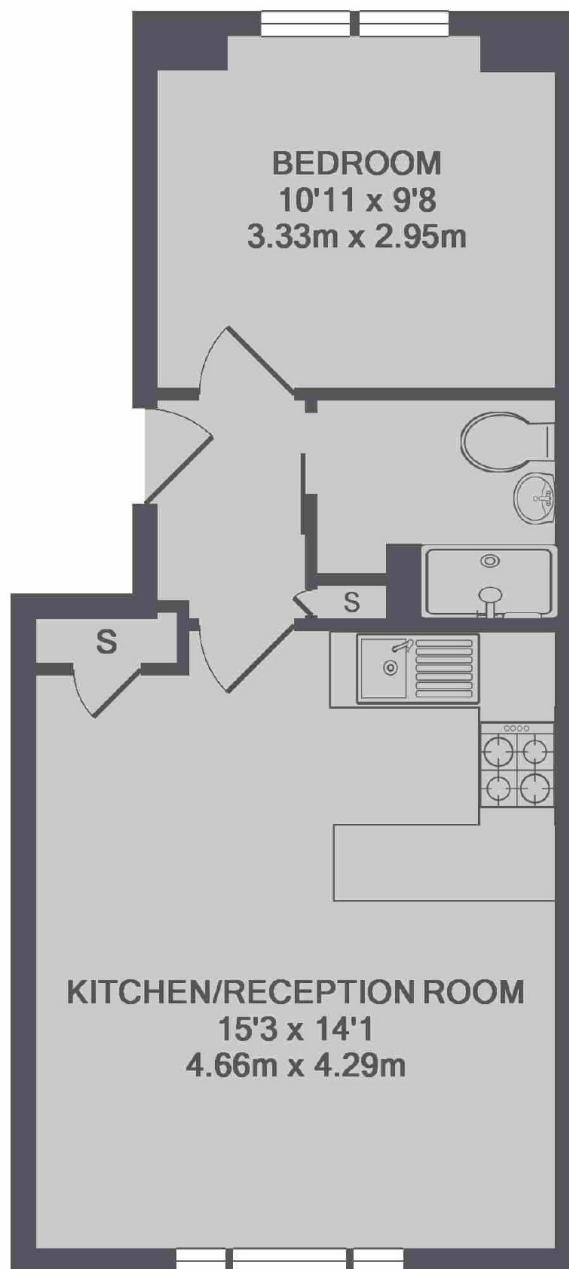
A stylish one double bedroom apartment located on the raised ground floor on Gloucester Terrace. The property boasts high ceilings, large windows with a south facing reception and open plan kitchen. This spacious apartment is part of an attractive white stucco fronted building.

Located towards the top end of Gloucester Terrace nearer Queensway and Royal Oak underground stations. Within half a mile to the Paddington underground stations.

### Features

Double Bedroom  
South Facing Reception  
Open Plan Kitchen  
Shower Room  
403 Sq.Ft/37.4 Sq.M  
Long Lease

Gloucester Terrace,  
London, W2



TOTAL APPROX. FLOOR AREA 403 SQ.FT. (37.4 SQ.M.)

**Dexters**

Hyde Park and Bayswater  
4-5 Spring Street  
London  
W2 3RA  
Sales  
020 7298 1550

Energy Rating: C. We aim to make our particulars both accurate and reliable. However they are not guaranteed; nor do they form part of an offer or contract. If you require clarification on any points then please contact us, especially if you're traveling some distance to view. Please note that appliances and heating systems have not been tested and therefore no warranties can be given as to their good working order.

 **RICS** | Regulated  
Estate Agent  
and Letting Agent

[dexters.co.uk](https://www.dexters.co.uk)