

## South Wharf Road, W2

### £970,000

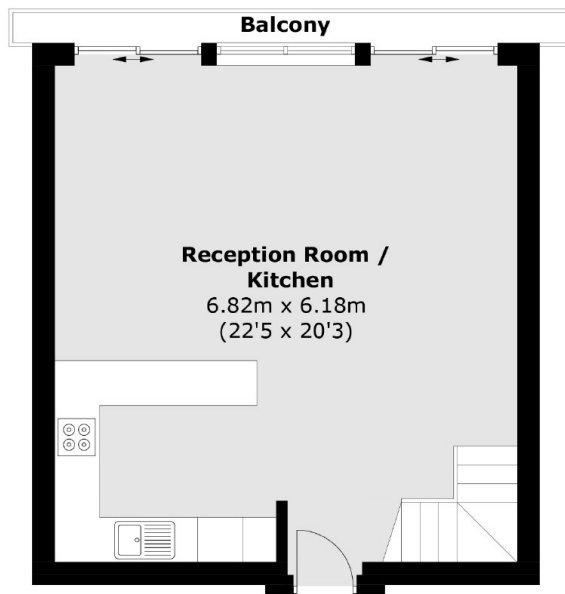
A stunning split level penthouse apartment in a secure, portered building (with a lift). Previously two bedrooms, now configured as a luxurious one double bedroom with a dressing room and two bathrooms (one en suite). The open plan kitchen and reception has a high specification kitchen and large windows, creating an incredible entertaining space.

Westcliffe Apartments is in the heart of Paddington, with plenty of shops and restaurants on the doorstep and easy access across London and to Heathrow. The green spaces of Hyde Park and the pleasant walks along the canal are a short walk away.

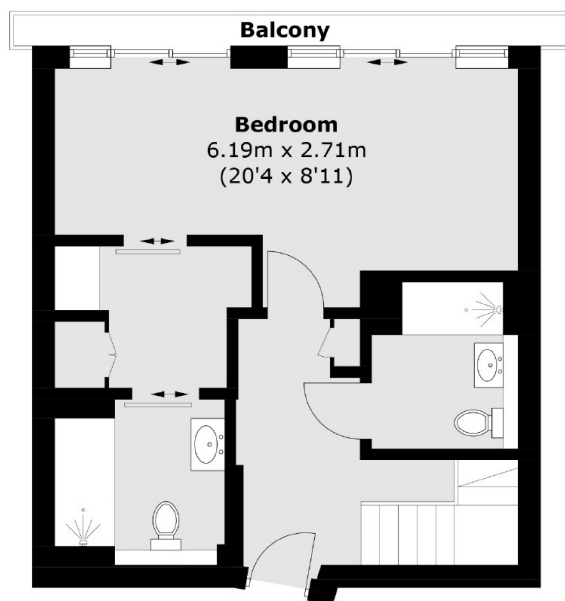
### Features

- Luxurious One Bedroom
- Penthouse
- Lift and Porter
- Split Level
- Large Windows
- High Specification

# South Wharf Road, London, W2



## Ninth Floor



## Eighth Floor

Total area (approx.): 83.8 sq. m (902.0 sq. ft)  
Balcony: 6.1 sq. m (65.6 sq. ft)