

## Seymour Street, W2

£1,107 Per week

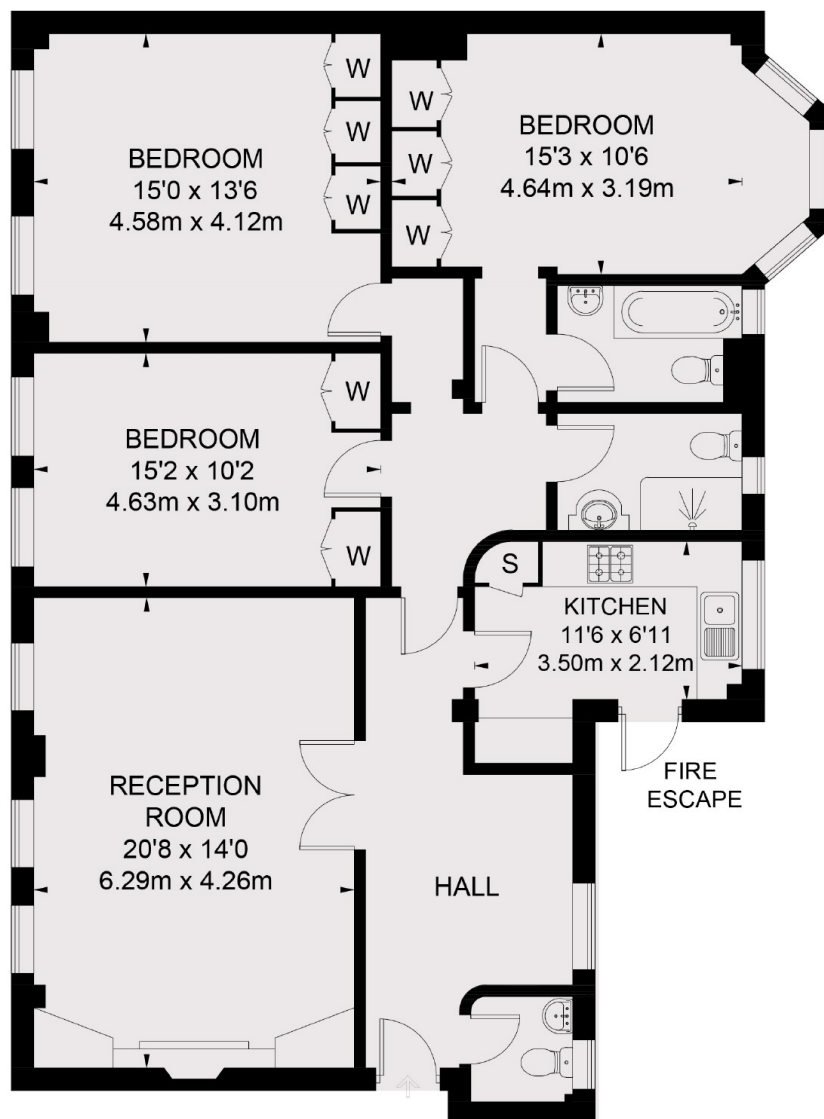
A three bedroom apartment packed with original features. The kitchen and bathrooms are contemporary and the bedrooms are generously sized with built in storage and wood floors.

Westchester House is on Seymour Street offering very easy access to Hyde Park, Oxford Street and Marylebone. The closest tube station is Marble Arch (Central Line) and Paddington Mainline Station for National Rail is close by.

### Features

- Three Bedrooms
- Two Bathrooms
- Guest WC
- Wood Floors
- Storage
- Hyde Park

# Seymour Street, London, W2



## FOURTH FLOOR

TOTAL APPROX FLOOR AREA 1094 SQ FT (121.25 SQ M.)

# Dexters

Hyde Park and Bayswater  
4-5 Spring Street  
London  
W2 3RA  
Lettings  
020 7298 1560

Energy Rating: D. We aim to make our particulars both accurate and reliable. However they are not guaranteed; nor do they form part of an offer or contract. If you require clarification on any points then please contact us, especially if you're traveling some distance to view. Please note that appliances and heating systems have not been tested and therefore no warranties can be given as to their good working order.

 **RICS** | Regulated  
Estate Agent  
and Letting Agent

[dexters.co.uk](https://www.dexters.co.uk)