



## Porchester Square, W2

£510 Per week

A two double bedroom apartment situated on the second floor (with lift) of this popular purpose built block. The property has an open plan kitchen/reception room with access to a balcony and an dishwasher & washer drier.

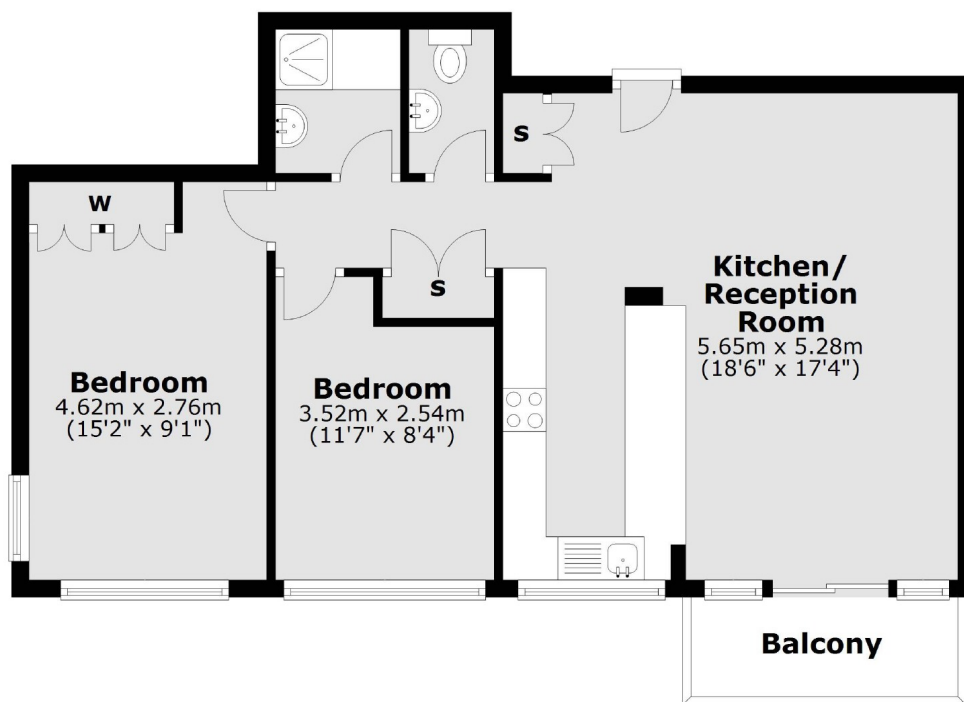
The closest stations are Royal Oak and Paddington and the property is within easy reach of Hyde Park and Westbourne Grove.

### Features

- Two Double Bedrooms
- Private Balcony
- Portered Block
- Gas Heating
- Fully Fitted Kitchen
- Communal Gardens

## Porchester Square, London, W2

### Second Floor



Total area: approx. 59.8 sq. metres (644.1 sq. feet)

#### Contact

To arrange a viewing call our office on the number below or visit our website.



Energy Rating: C. We aim to make our particulars both accurate and reliable. However they are not guaranteed; nor do they form part of an offer or contract. If you require clarification on any points then please contact us, especially if you're traveling some distance to view. Please note that appliances and heating systems have not been tested and therefore no warranties can be given as to their good working order.