



## Sussex Gardens, W2

£923 Per week

A spacious two bedroom ground floor apartment, on the doorstep of Hyde Park and Local transport. With two bathrooms and wooden floors, the property has a private garden and a large reception with room to dine.

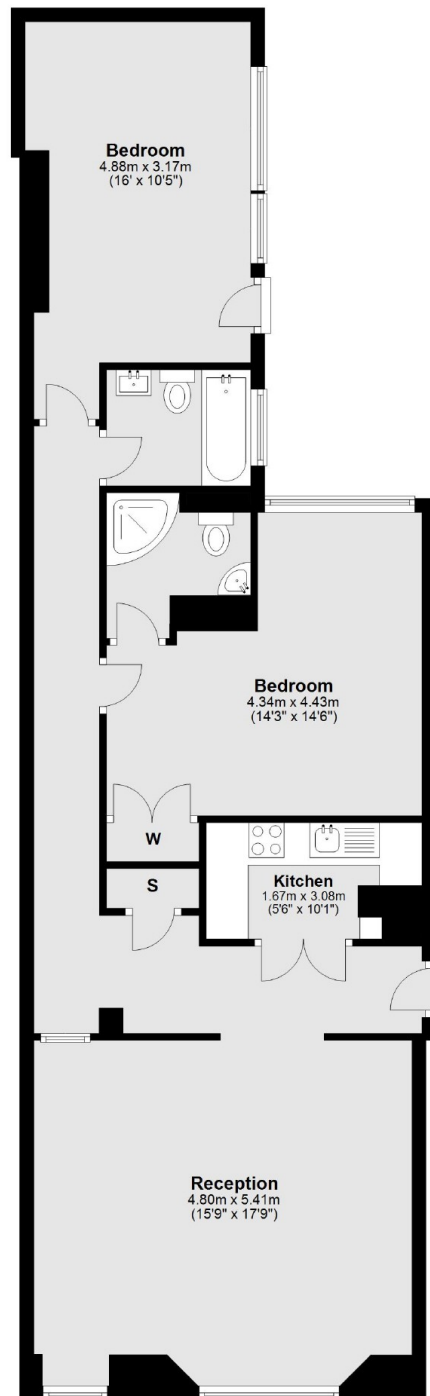
Sussex Gardens is near to Lancaster Gate underground and Paddington train station. Hyde Park and Kensington Gardens are also within walking distance.

### Features

- Two Bedrooms
- Two Bathrooms
- Ground Floor
- Period Conversion
- Spacious
- Private Garden

# Sussex Gardens, London, W2

## Raised Ground Floor



Total area: approx. 90.7 sq. metres (975.9 sq. feet)

# Dexters

Hyde Park and Bayswater  
4-5 Spring Street  
London  
W2 3RA  
Lettings  
020 7298 1560

Energy Rating: C. We aim to make our particulars both accurate and reliable. However they are not guaranteed; nor do they form part of an offer or contract. If you require clarification on any points then please contact us, especially if you're traveling some distance to view. Please note that appliances and heating systems have not been tested and therefore no warranties can be given as to their good working order.

 **RICS** | Regulated  
Estate Agent  
and Letting Agent

[dexters.co.uk](http://dexters.co.uk)