



Queensway, W2

£965,000

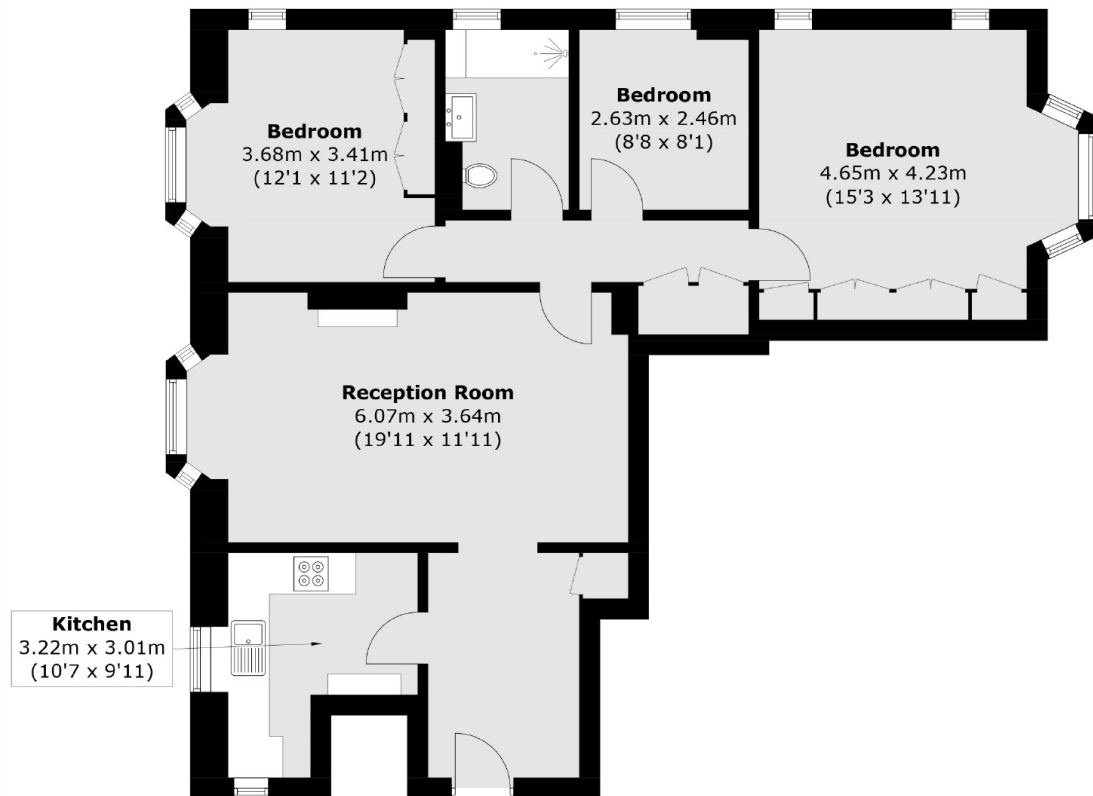
A beautifully presented apartment on the fourth floor (with lift) of a portered mansion block. With three double bedrooms, a stylish family bathroom, modern fitted kitchen and spacious reception with parquet flooring, this is an ideal pied a terre or home for those looking for an elegant property.

Arthur Court is conveniently located near the Bayswater regeneration, with the exciting Whiteleys development. There's plenty of local shops, pubs and restaurants off Westbourne Grove and the green spaces of Hyde Park are a short walk away.

Features

- Three Bedrooms
- Separate Modern Kitchen
- Parquet Flooring
- Spacious Reception
- Porter and Lifts
- Bayswater

Queensway, London, W2



Total area (approx.): 88.1 sq. m (948.3 sq. ft)