



Hermitage Street, W2

£695,000

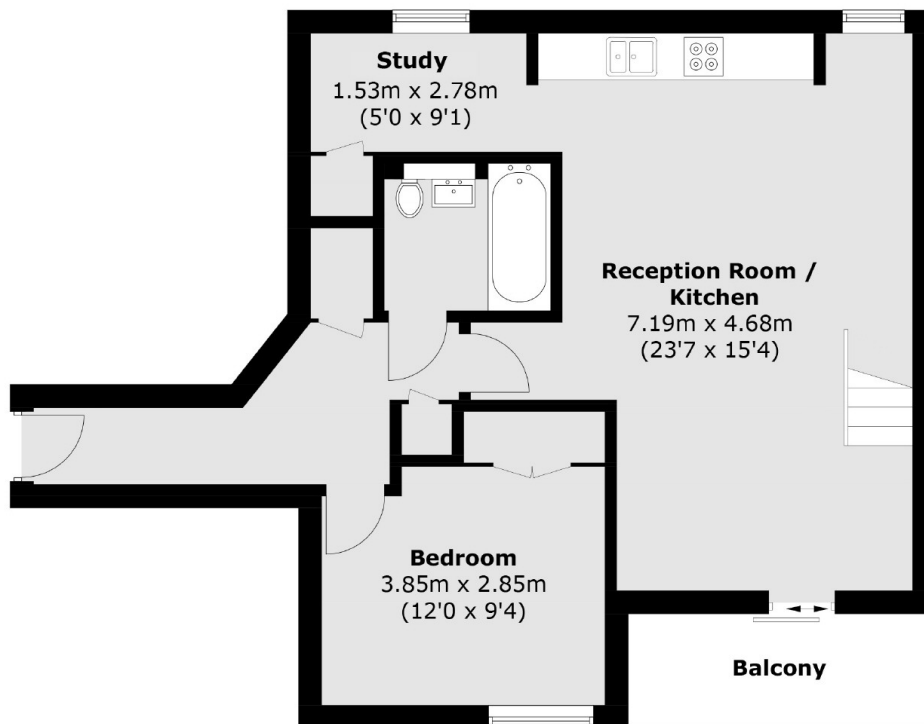
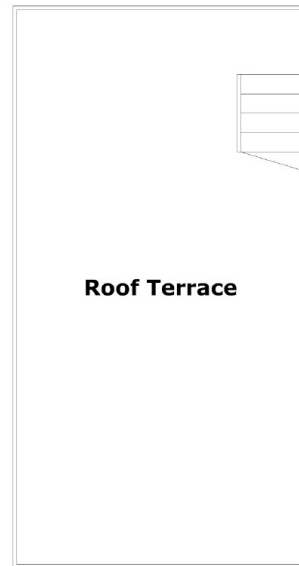
A top floor flat (with a lift) in a modern apartment complex with a 24 hour porter, communal roof garden and an underground parking space. The dual aspect reception room is open plan with a high specification kitchen and leads directly to both the private balcony and roof garden. There's a double bedroom with in built wardrobes and a separate study.

Hermitage Street is conveniently located for Paddington station, giving access to Heathrow and across (and out of) London. There's a choice of local restaurants, pubs and shops within walking distance.

Features

- One Double Bedroom
- Study
- Balcony and Roof Terrace
- Communal Roof Terrace
- Lift and Concierge
- Underground Parking Space

Hermitage Street, London, W2



Total area (approx.): 65.2 sq. m (701.8 sq. ft)
Balcony & roof terrace area : 32.2 sq. m (346.6 sq. ft)