



Hermitage Street, W2

£725,000

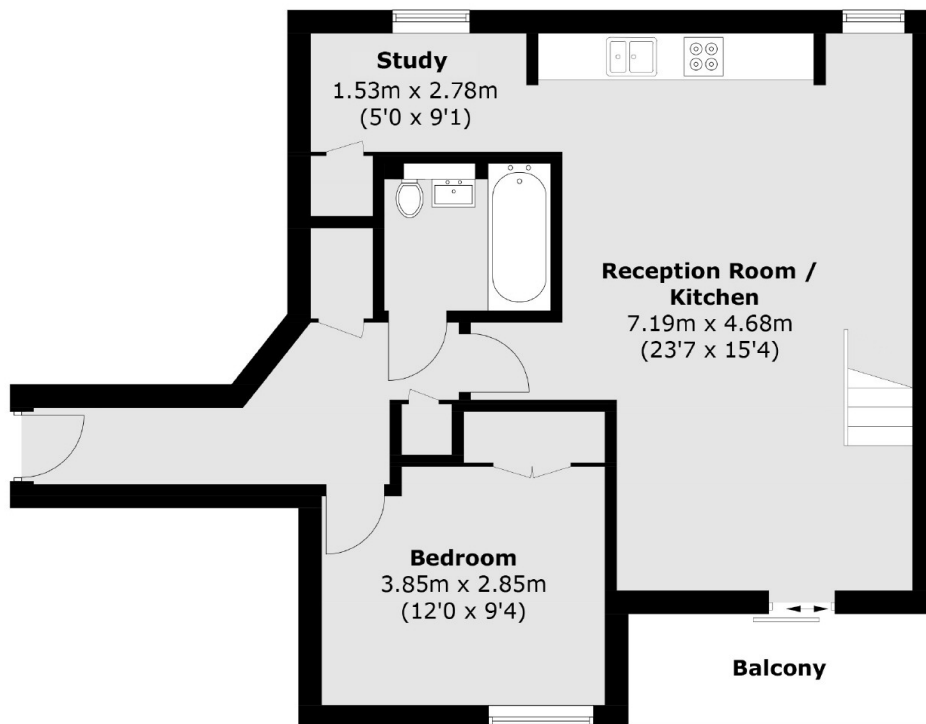
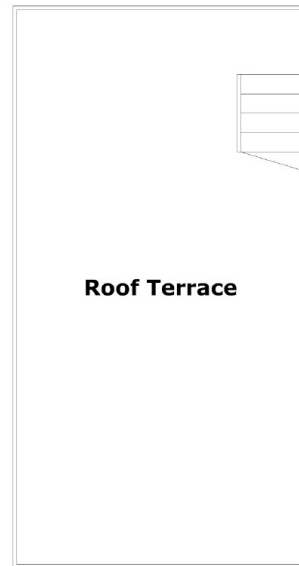
A top floor flat (with a lift) in a modern apartment complex with a 24 hour porter, communal roof garden and an underground parking space. The dual aspect reception room is open plan with a high specification kitchen and leads directly to both the private balcony and roof garden. There's a double bedroom with in built wardrobes and a separate study.

Hermitage Street is conveniently located for Paddington station, giving access to Heathrow and across (and out of) London. There's a choice of local restaurants, pubs and shops within walking distance.

Features

One Double Bedroom
Study
Balcony and Roof Terrace
Communal Roof Terrace
Lift and Concierge
Underground Parking Space

Hermitage Street, London, W2



Total area (approx.): 65.2 sq. m (701.8 sq. ft)
Balcony & roof terrace area : 32.2 sq. m (346.6 sq. ft)