



Clarendon Place, W2
£2,500,000

Dexters



Clarendon Place, W2

A lateral apartment with incredible views over Hyde Park in a portered building, with a lift and a private garage.

On the sixth floor of a purpose built portered building, this flat has had a recent refurbishment and offers luxury and convenience, making it an ideal home or pied a terre.

The double reception room has wooden floors and large windows that lead to the private South facing balcony, with unparalleled views across Hyde Park. The separate kitchen is high specification and leads to a handy utility room.

The principal suite has a dressing room and spacious luxury en suite and both the second bedroom and the study have built in closet space and have use of the family bathroom. Included in the sale is exclusive use of a private garage.

Clarendon Place is conveniently located opposite Hyde Park and is within short walking distance of Oxford Street, the Whiteley's regeneration project in Bayswater and Paddington station for easy access across London and to Heathrow.

Features

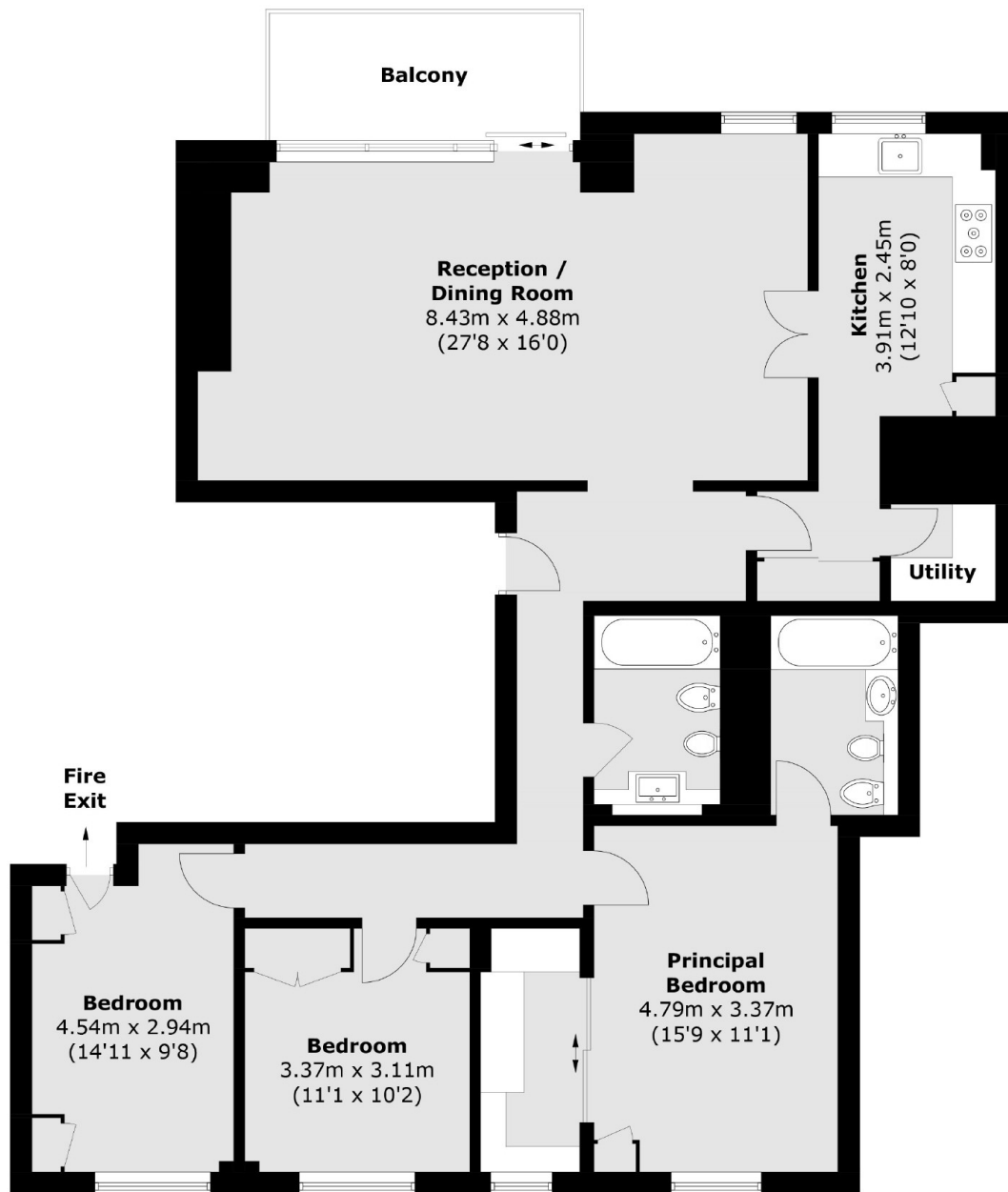
- Two Double Bedrooms
- One Study
- Hyde Park Views
- Private Garage
- Porter and Lift
- Digitally Staged







Clarendon Place, London, W2



Sixth Floor

Total area (approx.): 129.1 sq. m (1,389.6 sq. ft)
Balcony: 7.6 sq. m (81.8 sq. ft)

Dexters

Hyde Park and Bayswater
4-5 Spring Street
London
W2 3RA
Sales
020 7298 1550

Energy Rating: C. We aim to make our particulars both accurate and reliable. However they are not guaranteed; nor do they form part of an offer or contract. If you require clarification on any points then please contact us, especially if you're traveling some distance to view. Please note that appliances and heating systems have not been tested and therefore no warranties can be given as to their good working order.

 **RICS** | Regulated
Estate Agent
and Letting Agent

[dexters.co.uk](https://www.dexters.co.uk)