

Gloucester Gardens, W2

£1,660,000

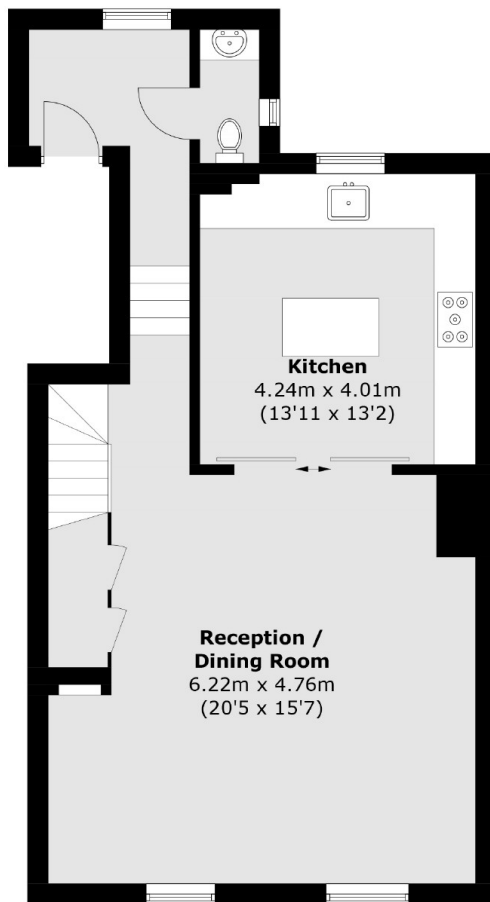
A stylish, split level, top floor apartment in a Victorian conversion. The spacious reception room has room to dine and leads to the high specification with central island. Upstairs, there are en suite double bedrooms, with the principal suite having a walk in closet.

Gloucester Gardens is ideally located for Paddington station, giving easy access across and out of London and Heathrow. The green spaces of Hyde Park are close by, as are plenty of local shops and restaurants.

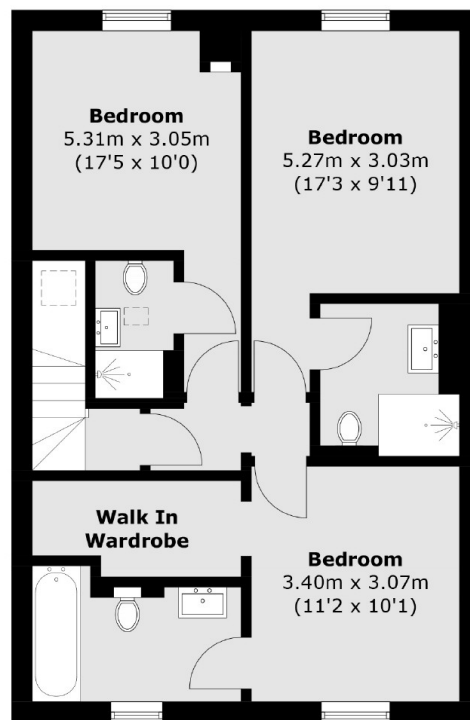
Features

- Three Bedrooms
- Three Bathrooms
- High Specification
- Separate Kitchen
- Split Level
- Victorian Conversion
- Share Of Freehold

Gloucester Gardens, London, W2



Third Floor



Fourth Floor

Total area (approx.): 128.1 sq. m (1,378.8 sq. ft)