



Gloucester Terrace, W2
£1,390,000

Dexters



Gloucester Terrace, W2

A beautifully refurbished, high specification apartment on the top two floors of a white stucco fronted Victorian conversion.

The property has a spacious reception room with room to dine and a feature fireplace, the separate kitchen has Italian quartz counter tops and there's high ceilings, an integrated SONOS sound system and Herringbone flooring throughout.

All three bedrooms have built in wardrobes, with the principal bedroom having its own en suite and both bathrooms have premium Italian porcelain tiles. For storage, there's access to two separate loft spaces.

This property is ideal for anyone seeking luxury living and a convenient location.

Gloucester Terrace is close to Paddington Station, gives easy access across and out of London and to Heathrow. The green spaces of Hyde Park are close by, as are plenty of local shops and restaurants.

Features

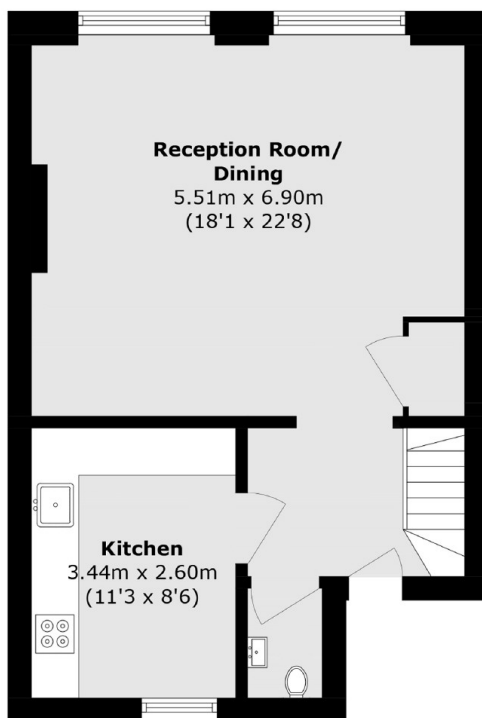
- High Specification
- Newly Refurbished
- Three Bedrooms
- Two Bathrooms
- White Stucco Fronted
- Close to Paddington



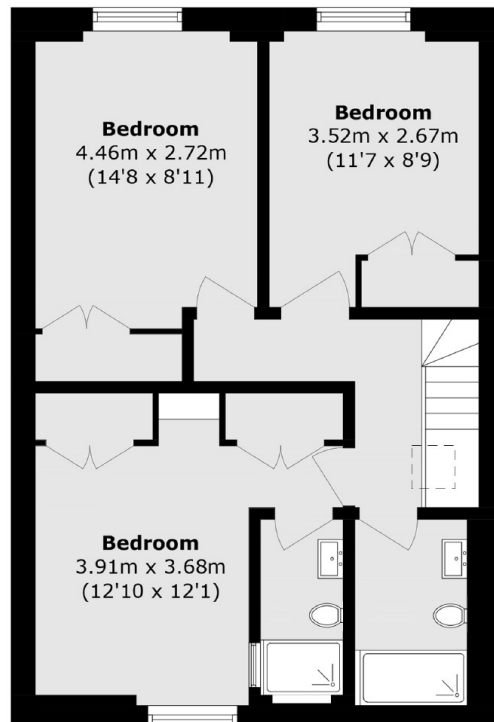




Gloucester Terrace, London, W2



Second Floor



Third Floor

Total area (approx.): 91.6 sq. m (985.9 sq. ft)