



Talbot Square, W2

£750,000

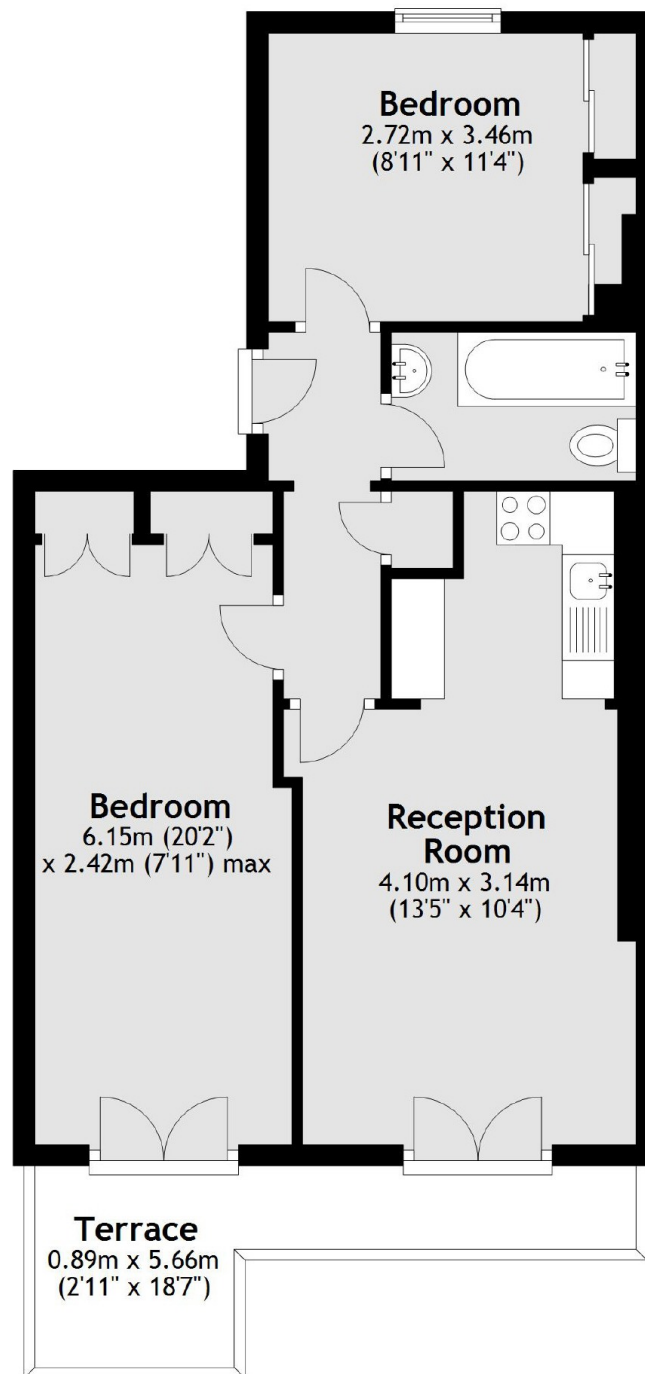
A well presented two double bedroom flat on the first floor (with lift) of a white stucco fronted building. With a reception room leading to the balcony, separate kitchen, wooden floors and high ceilings throughout, this is an ideal investment or first time purchase.

Ideally located within close proximity of Hyde Park and benefitting from the many local amenities as well as excellent transport links, from both Paddington and Lancaster Gate.

Features

- First floor
- Balcony
- High Ceilings
- Excellent Transport Links
- Lift
- Garden Square View

Talbot Square, London, W2



Total area: approx. 49.8 sq. metres (535.8 sq. feet)

Dexters

Hyde Park and Bayswater
4-5 Spring Street
London
W2 3RA
Sales
020 7298 1550

Energy Rating: D. We aim to make our particulars both accurate and reliable. However they are not guaranteed; nor do they form part of an offer or contract. If you require clarification on any points then please contact us, especially if you're traveling some distance to view. Please note that appliances and heating systems have not been tested and therefore no warranties can be given as to their good working order.

 **RICS** | Regulated
Estate Agent
and Letting Agent

[dexters.co.uk](https://www.dexters.co.uk)