

Edgware Road, W2

£695 Per week

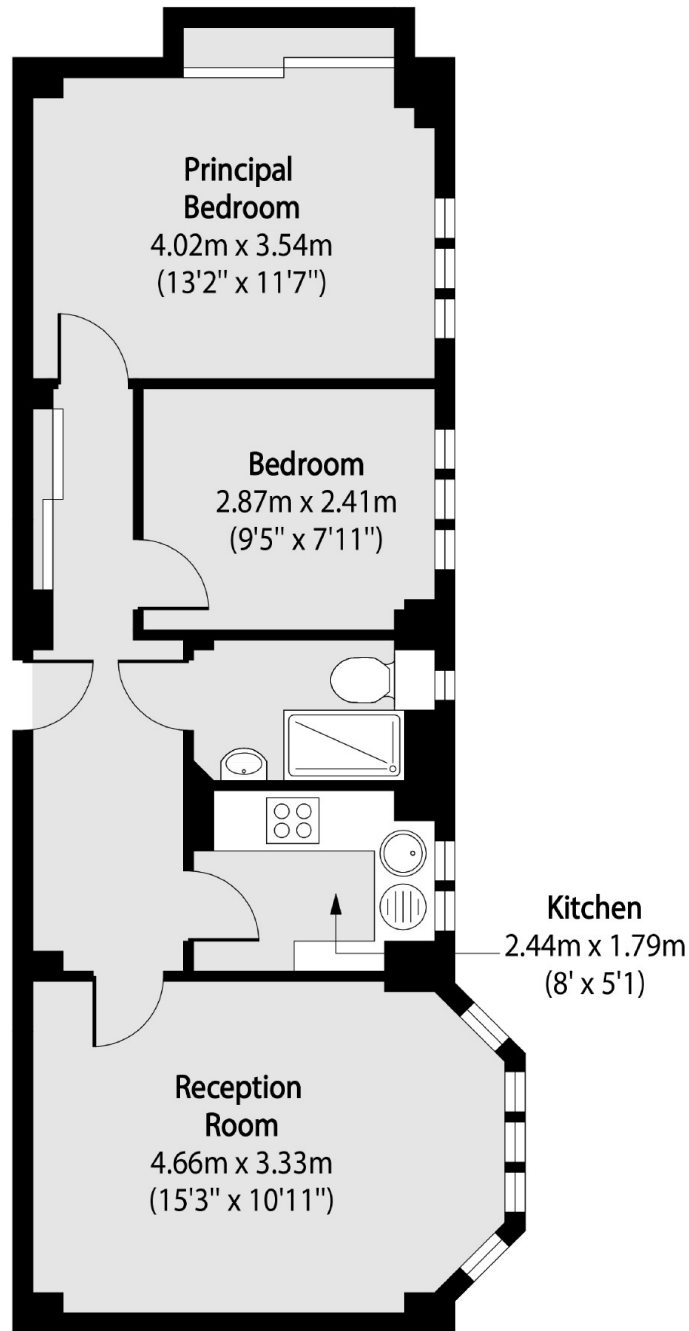
A large two bed on the 1st floor (lift) of a portered purpose built block. The property has a separate modern kitchen, wooden flooring, and built in storage.

Moments from the shops, bars and restaurants along the Edgware Road, the property is less than a mile from Hyde Park.

Features

- Two Bed
- Furnished
- Portered Block
- Lift
- Separate Kitchen
- Hot Water + Heating Included

Edgware Road,
London, W2



Total area (approx): 51.52 sq m (555 sq. ft)