



## Gloucester Terrace, W2

£975,000

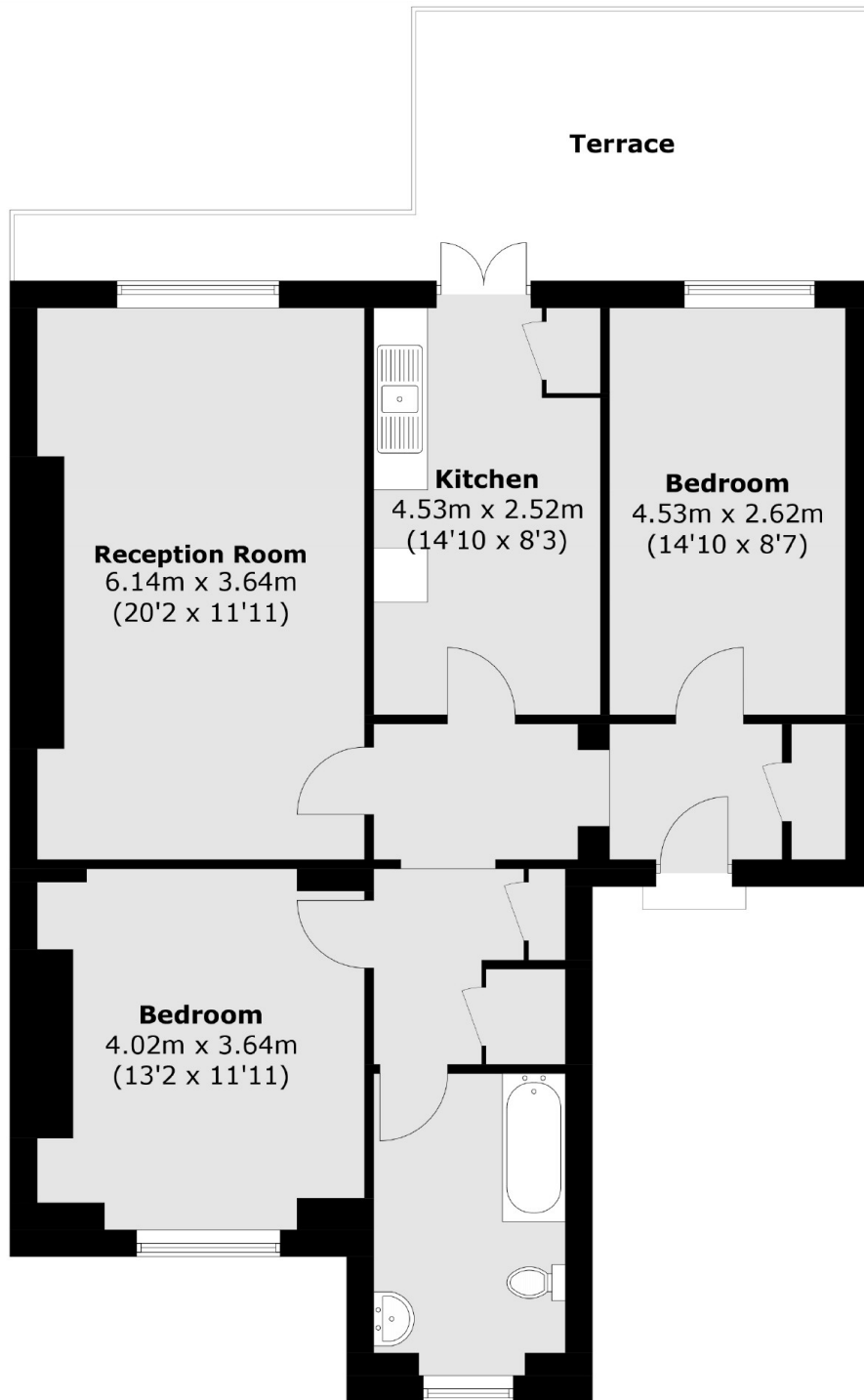
An unmodernised first floor apartment in a Victorian conversion. With a private balcony leading off the reception room, two double bedrooms, a separate kitchen and high ceilings throughout, this makes an ideal investment or home, for buyers looking for a project.

Gloucester Terrace has amazing transport links, across and out of London and to Heathrow from Paddington. The green spaces of Hyde Park are close by and there's plenty of local shops and restaurants to choose from.

### Features

- First Floor
- High Ceilings
- Unmodernised
- Balcony
- Victorian Conversion
- Ideal Refurbishment Project

# Gloucester Terrace, London, W2



Total area (approx.): 82.7 sq. m (890.3 sq. ft)  
Terrace : 18.5 sq. m (199.1 sq. ft)

**Dexters**

Hyde Park and Bayswater  
4-5 Spring Street  
London  
W2 3RA  
Sales  
020 7298 1550

Energy Rating: C. We aim to make our particulars both accurate and reliable. However they are not guaranteed; nor do they form part of an offer or contract. If you require clarification on any points then please contact us, especially if you're traveling some distance to view. Please note that appliances and heating systems have not been tested and therefore no warranties can be given as to their good working order.

 **RICS** | Regulated  
Estate Agent  
and Letting Agent

[dexters.co.uk](http://dexters.co.uk)