



## Stanhope Place, W2

£1,546 Per week

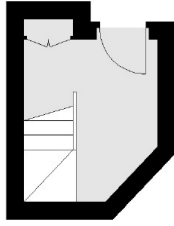
Arranged over two floors of a Grade II listed building, this stunning apartment benefits from a large double reception-dining room (26ft x 20ft), fully fitted kitchen with integrated appliances, three luxury shower rooms (one of which is en suite) and a walk in wardrobe off the principle bedroom.

Stanhope Place provides easy access to the many attractions and cycles routes of Hyde Park in addition the world famous shopping district, Oxford Street.

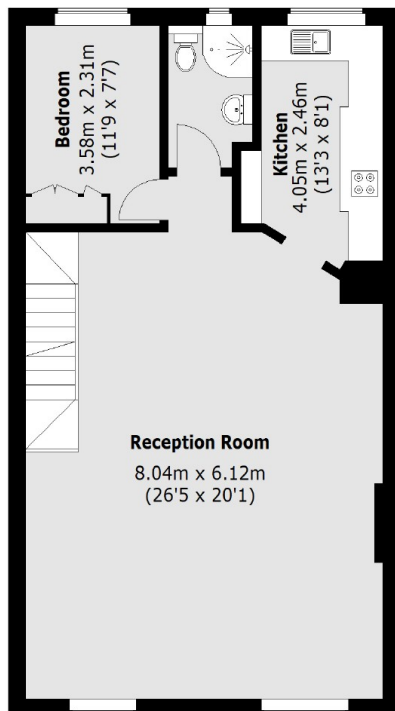
### Features

- Grade II Listed
- Four Bedrooms
- Walk In Wardrobe
- Fitted Kitchen
- Luxury Bathrooms
- Marble Arch

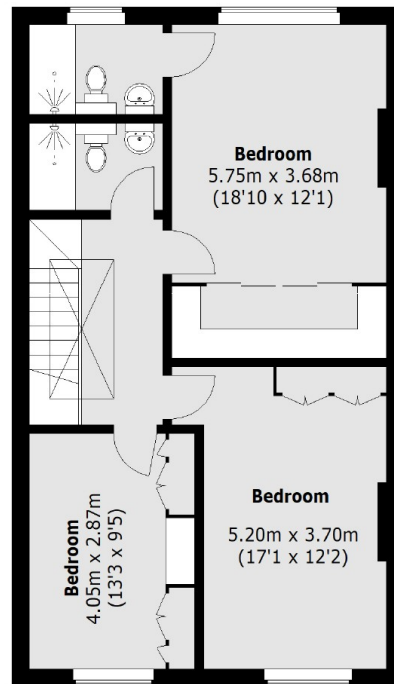
# Stanhope Place, London, W2



**Second Floor**



**Third Floor**



**Fourth Floor**

Total area (approx.): 146.1 sq. m (1,572.6 sq. ft)