



Stanhope Terrace, W2

£1,100 Per week

Dexters



Stanhope Terrace, London, W2

An impressive two bedroom, two bathroom property on the first floor of a period conversion, moments from Hyde Park.

This grand two bedroom apartment has double height ceilings throughout, with floor to ceiling windows in the reception room. A unique feature is the wrap around balcony finishing at the master bedroom with an unusual curved terrace.

The stylish interior and generous sized rooms would appeal to both professional sharers or a small family. The large open plan kitchen and reception area has space for relaxing, dining and entertaining.

With direct lift access into the apartment and two contemporary bathrooms, this property offers luxury modern living at its best, in a central location, close to local transport.

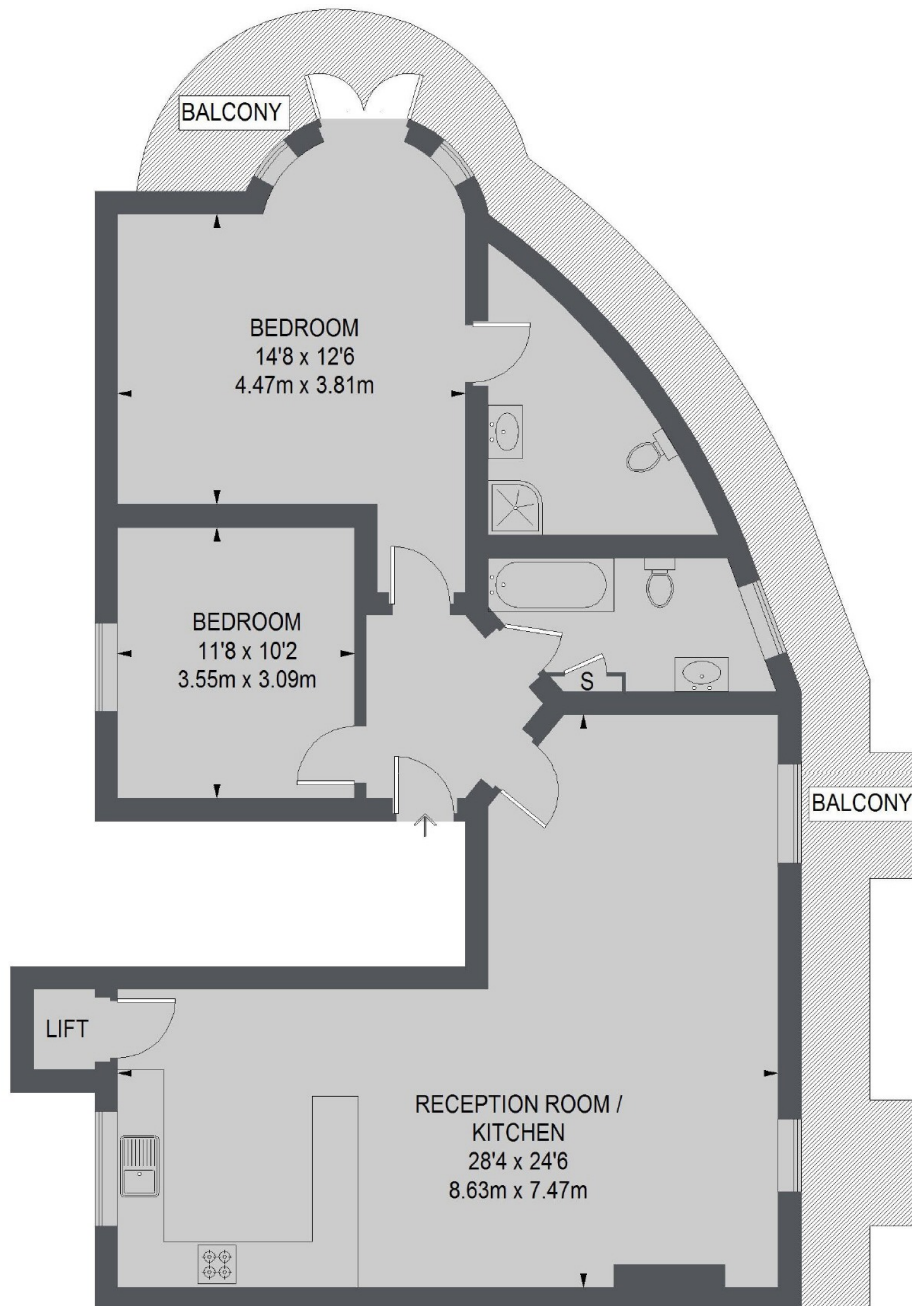
Within easy reach of the bars, boutiques and bistros of Connaught Village and just moments from Hyde Park, the closest stations are Lancaster Gate and Paddington.

Features

- Two Bedrooms
- Two Bathrooms
- First Floor
- Wrap Around Terrace
- High Ceilings
- Lift



Stanhope Terrace, London, W2



TOTAL APPROX. FLOOR AREA
(EXCLUDING LIFT)
1096 SQ. FT. (101.85 SQ. M.)