



Brook Mews North, W2

£2,250 Per week

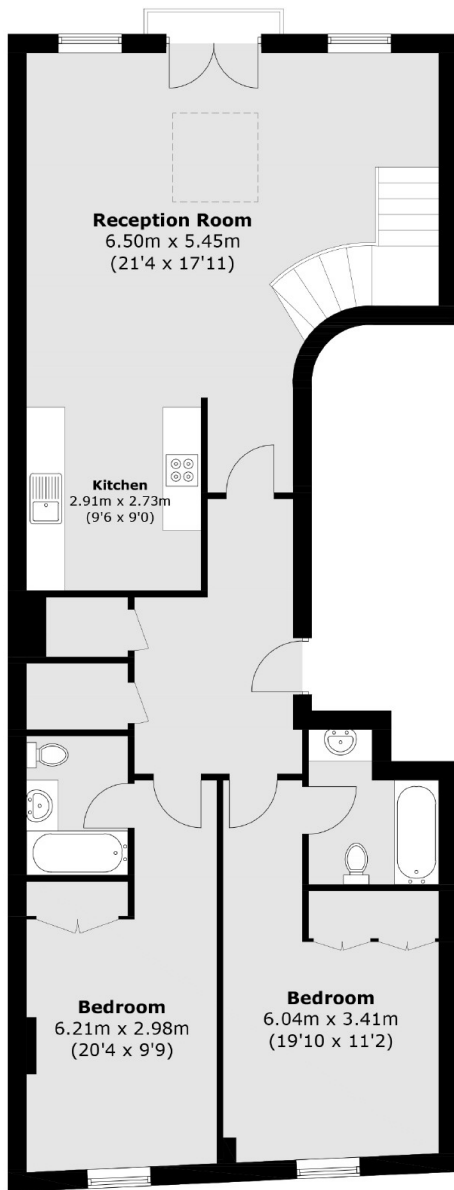
SHORT LET - A stunning top floor apartment set within a converted mews within walking distance of Lancaster Gate and the green spaces of Hyde Park. This apartment has a very cool industrial New York loft feeling fit with double height ceilings, exposed brick and sky light flooding the reception room with natural light. The property comprises an impressive reception room with high ceilings, a semi-open plan kitchen with integrated appliances. Connecting the reception room to the bedrooms on this floor is a wide hallway with storage, a contemporary bathroom and a utility room. The two rear bedrooms are both very good sized and with fitted wardrobes.

Brook Mews North is ideally located near the scenic open spaces of both Hyde Park and Kensington Gardens. Transport links can be found at Lancaster Gate (Central Line) and Paddington (Network rail, Heathrow Express) and underground (Hammersmith & City, Bakerloo, Circle and District lines) stations. Soon to be of further benefit is the imminent arrival of Crossrail which will offer faster journey times across London into the City and towards Canary Wharf.

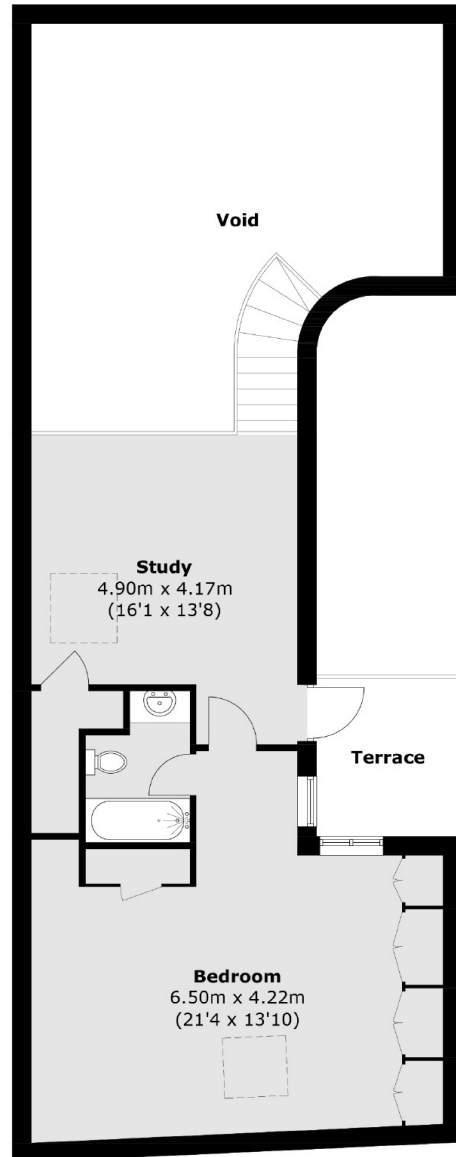
Features

- Roof Terrace
- Modern
- Architecturally Designed
- Parking
- Three Double Bedrooms
- Three Bathrooms

Brook Mews North, London, W2



Second Floor



Third Floor

Total area (approx.): 155.2 sq. m (1,670.5 sq. ft)
Terrace : 5.6 sq. m (60.3 sq. ft)