



Southwick Street, W2

£575 Per week

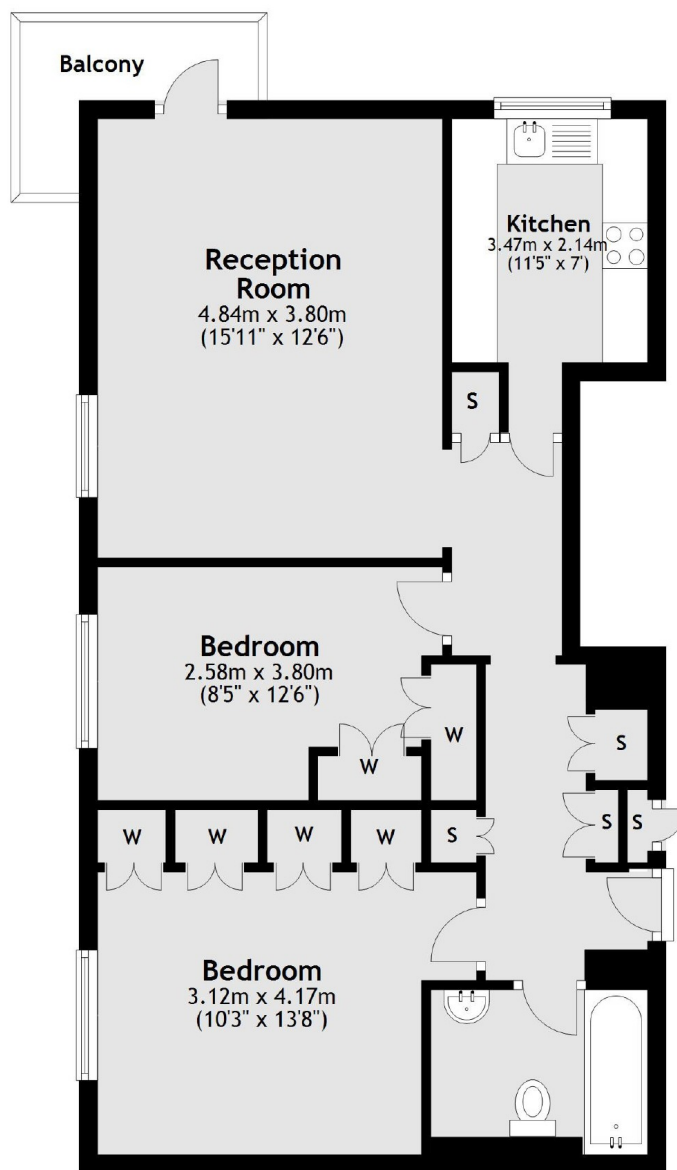
A spacious two bedroom apartment in a portered building with lift access. Close to Hyde Park and local transport, the property has a good size reception with wooden floors, two double bedrooms and a private balcony.

This property's closest station is Paddington with easy access to Heathrow Express and Hyde Park is just a short walk away.

Features

- Balcony
- Two Bedrooms
- Porter
- Lift Access
- Wooden Floors
- Hyde Park

Southwick Street, London, W2



Total area: approx. 66.0 sq. metres (710.3 sq. feet)