



Westbourne Terrace, W2

£427 Per week

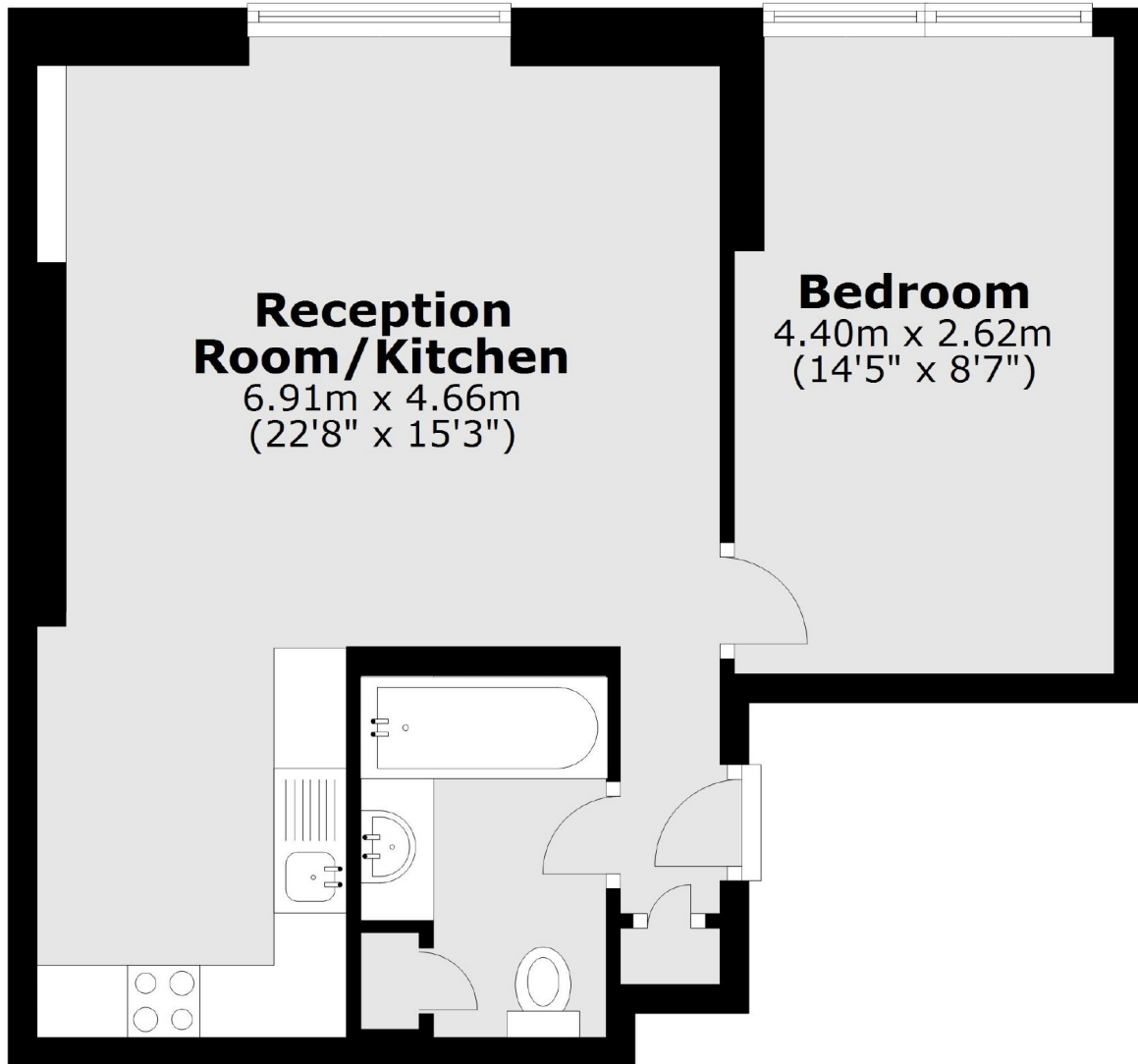
A one double bedroom apartment in a Victorian period conversion on the third floor (lift access). The property has high ceilings, ample storage and an open plan layout.

Westbourne Terrace is conveniently located within close proximity to Paddington, Lancaster Gate and Bayswater stations. The property is only moments from the green spaces of Hyde Park and Kensington Gardens.

Features

- One Double Bedroom
- Ample Storage
- High Ceilings
- Lift Access
- Open Plan Layout

Westbourne Terrace,
London, W2



Total area: approx. 44.2 sq. metres (476.1 sq. feet)