

## Porchester Square, W2

£590 Per week

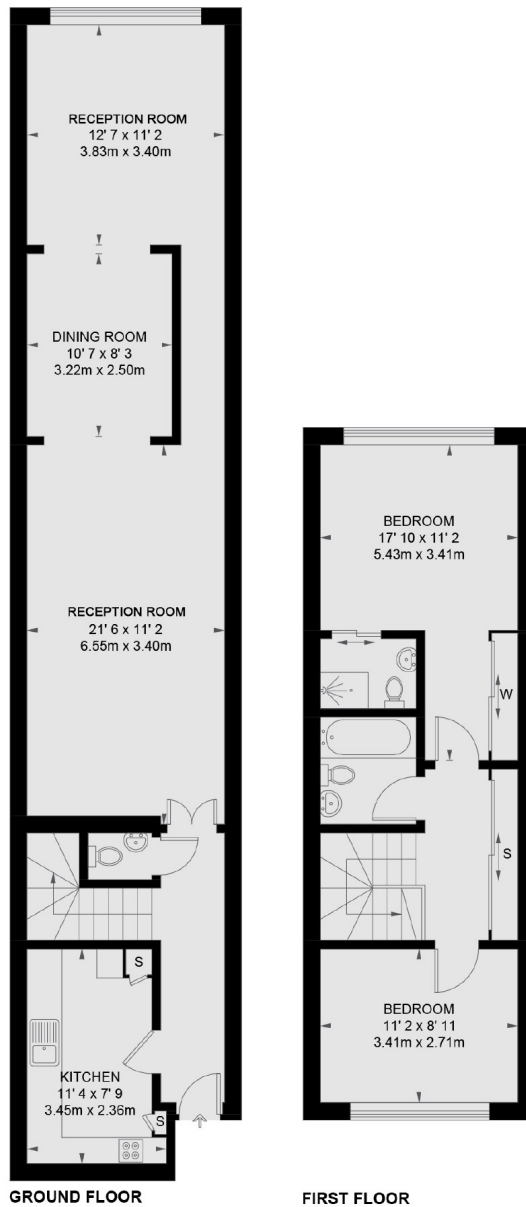
A modern and spacious two bedroom, two bathroom apartment located in a portered building with lift access. Arranged over two floors, the property is close to local shops and transport and has two receptions and built in storage.

The closest stations are Bayswater and Queensway and Hyde Park is a short walk away.

### Features

- Two Double Bedrooms
- Two Bathrooms
- Fitted Kitchen
- Split Level
- Porter
- Lift Access

## Porchester Square, London, W2



TOTAL APPROX. FLOOR AREA 1161 SQ. FT. (107.9 SQ. M.)

### Contact

To arrange a viewing call our office on the number below or visit our website.



Energy Rating: C. We aim to make our particulars both accurate and reliable. However they are not guaranteed; nor do they form part of an offer or contract. If you require clarification on any points then please contact us, especially if you're traveling some distance to view. Please note that appliances and heating systems have not been tested and therefore no warranties can be given as to their good working order.