



South Wharf Road, W2

£900 Per week

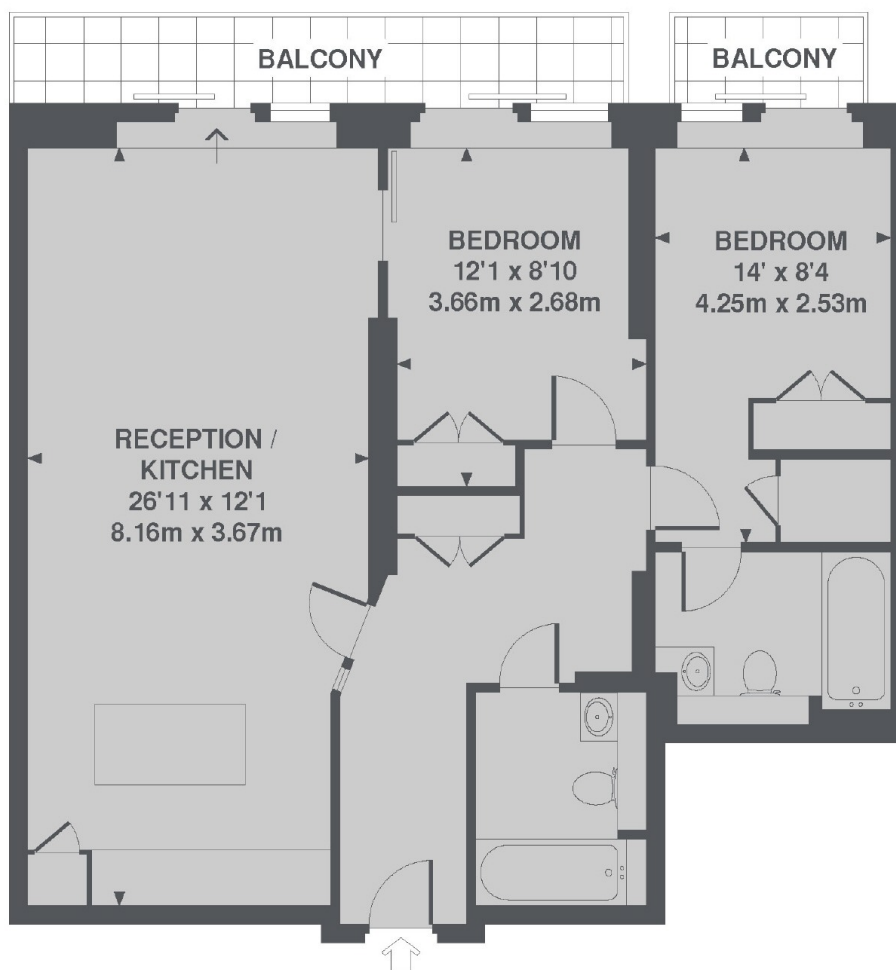
A large and modern two bedroom apartment on the first floor of this popular waterside development. Layout includes an open plan kitchen/reception with balcony, master bedroom with en suite and a modern bathroom.

The property is located within easy walking distance of Paddington underground station and also the open spaces of Hyde Park.

Features

- Modern New Build
- Two Bedrooms
- Two Bathrooms
- 24- Hour Concierge
- Wooden Floors
- Balcony

South Wharf Road, London, W2



TOTAL APPROX. FLOOR AREA 763 SQ. FT. (70.9 SQ. M.)

Dexters

Hyde Park and Bayswater
4-5 Spring Street
London
W2 3RA
Lettings
020 7298 1560

Energy Rating: D. We aim to make our particulars both accurate and reliable. However they are not guaranteed; nor do they form part of an offer or contract. If you require clarification on any points then please contact us, especially if you're traveling some distance to view. Please note that appliances and heating systems have not been tested and therefore no warranties can be given as to their good working order.

 **RICS** | Regulated
Estate Agent
and Letting Agent

dexters.co.uk