



Westbourne Terrace, W2

£520 Per week

A spacious one bedroom flat closed to Hyde Park within a stucco-fronted Victorian terraced building. The property has a large open plan reception with breakfast bar, high ceilings and wood flooring throughout.

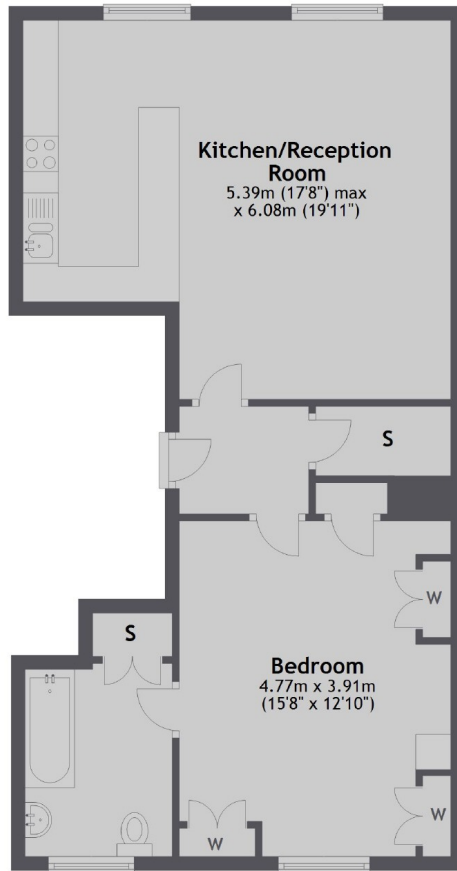
This property is close to Paddington Mainline Station for London Underground, National Rail and Heathrow Express and Lancaster Gate Station for the Central Line.

Features

- One Bedroom
- Wood Floors
- Open Plan
- Breakfast Bar
- Period Conversion
- Hyde Park

Westbourne Terrace, London, W2

Third Floor



Total area: approx. 61.8 sq. metres (665.3 sq. feet)