

Porchester Road, W2

£2,750 Per week

The entry level offers three bedrooms equipped with luxurious en-suite bathrooms, a utility room and a large corridor that leads to the centrepiece spiral stairwell.

The first floor consists of a beautifully bright and expansive open-plan living space with an eye catching mechanical copper kitchen that can be hidden away whilst entertaining whilst the top floor holds the private roof terrace & hot tub.

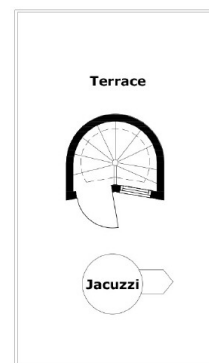
The apartment forms one of four residential units situated within the converted paper factory and also offers a concierge during the day, 24 hour security and gated off street parking.

The building is conveniently located a short walk from the local amenities of Notting Hill and Little Venice whilst Royal Oak, Paddington and Bayswater Tube Stations can all be reached within a

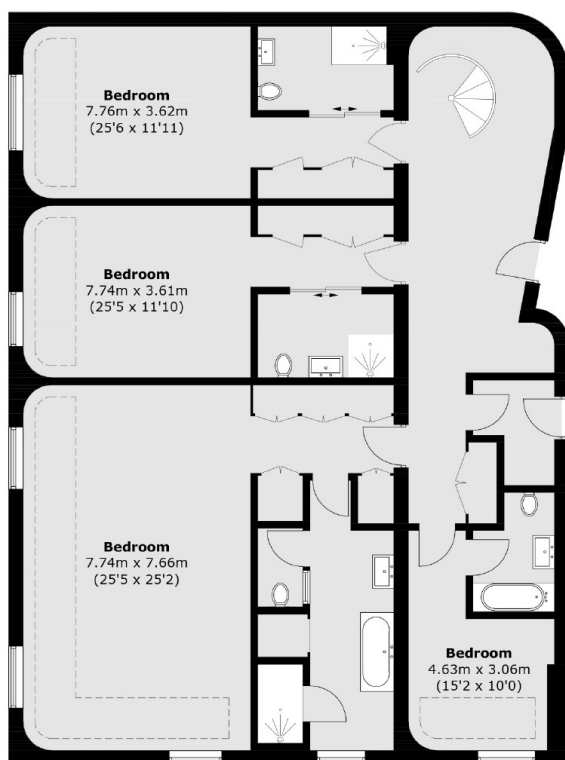
Features

- Architecturally designed
- Retractable glass roof
- Private roof terrace
- Hot Tub
- 24 hour security
- Day concierge
- Air conditioning
- Noise cancellation windows

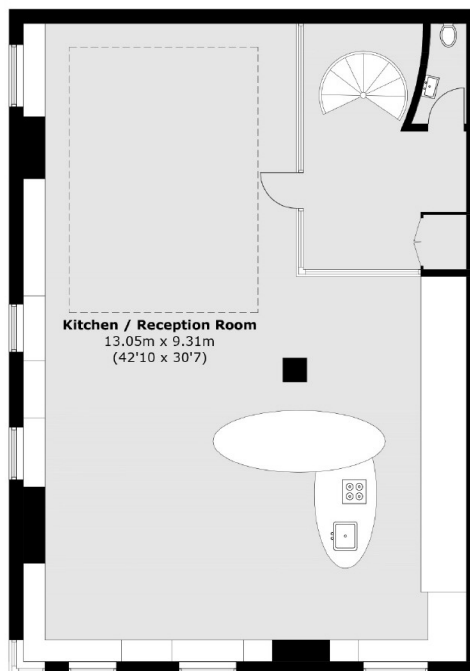
Porchester Road, London, W2



Roof Terrace



Fourth Floor



Fifth Floor

Total area (approx.): 292.2 sq. m (3,124.7 sq. ft)

Roof Terrace (approx.): 28 sq. m (301.4 sq. ft)