



Sheldon Square, W2

£1,399,950

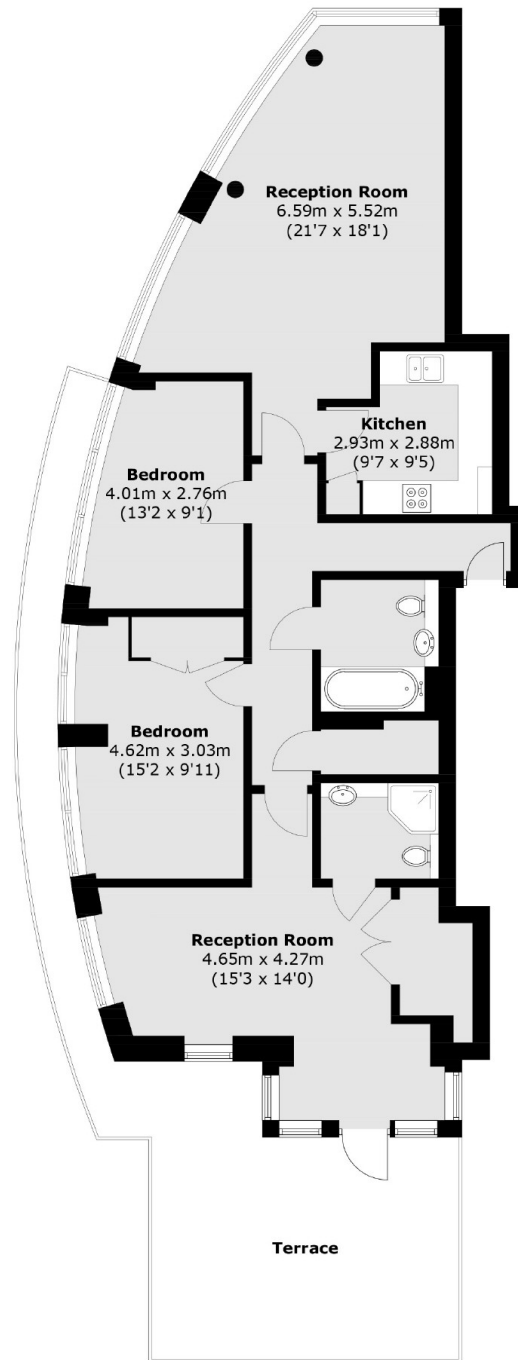
A stunning three bedroom, 10th floor apartment (with lift) in a modern portered building with off street parking. With 1,142 Sq. Ft of internal space, a roof terrace and balcony, and a high specification, this is an ideal property for anyone that loves entertaining and wants a convenient location.

Sheldon Square is ideally located for access to Paddington, giving convenient transport links across and out of London and to Heathrow. There's plenty of local shops and restaurants and Hyde Park is a stone's throw away.

Features

- Three Double Bedrooms
- Two Bathrooms
- Terrace And Balcony
- Off Street Parking
- Porter And Lift
- Close To Amenities

Sheldon Square, London, W2



Tenth Floor

Total area (approx.): 106.1 sq. m (1,142.1 sq. ft)

Terrace area (approx.): 34.2 sq. m (368.1 sq. ft)