



Gloucester Terrace, W2

£600 Per week

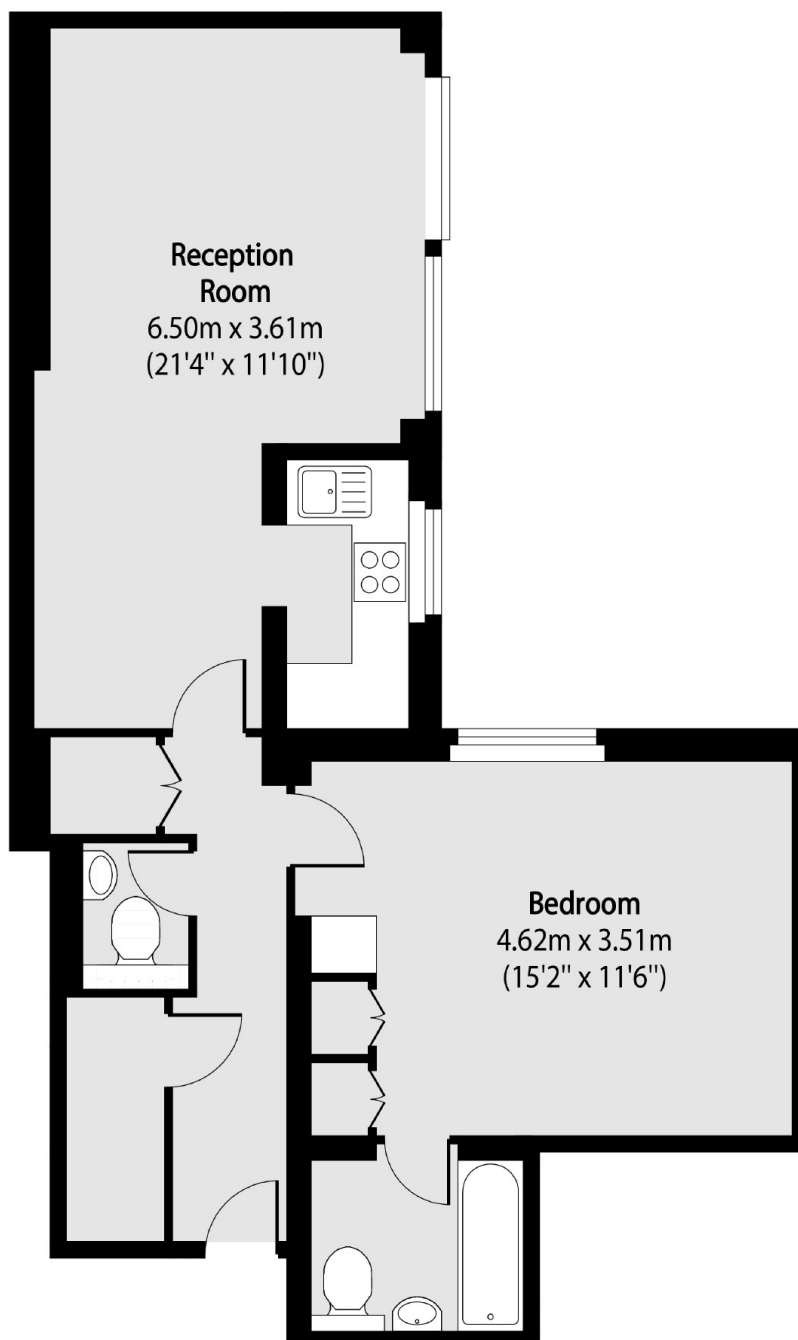
A well-presented, spacious one double bedroom flat in a classic Victorian conversion. This flat comprises of a spacious reception room that leads onto a large private patio, large double bedroom with an ensuite and separate guest W/C whilst being only a short walk from Hyde Park.

Gloucester Terrace is conveniently located within a short distance to Hyde Park. Lancaster Gate, Elizabeth Line and Paddington stations are also nearby.

Features

- Large Double Bedroom
- Private Patio
- Furnished
- Ensuite
- Guest W/C

Gloucester Terrace, London, W2



Total area (approx): 53.60 sq m (577 sq. ft)